

In-House Rapid PCB Prototyping Product Catalog

ProtoLaser ST

Circuit Board Plotters

Laser Structuring

Through-Hole Plating

Multilayers

SMT/Finishing

Micro Material Processing

Visit our
Virtual Showroom:

PCB Prototyping
Equipment in a
360-degree View

LPKF

Laser & Electronics

Do you have any Questions about your Order? Do you Require Technical Service?

You can find all sales and service contact information below.

Our experienced employees will be happy to assist you.

LPKF Sales and Service

Germany (LPKF Headquarters)

Phone	+49 (5131) 7095-0	E-Mail	sales.rp@lpkf.com	Website	www.lpkf.com
Fax	+49 (5131) 7095-90		support.rp@lpkf.com		

North/Central America

Phone	+1 (503) 454-4200	E-Mail	sales@lpkfusa.com	Website	www.lpkfusa.com
Fax	+1 (503) 682-7151		support@lpkfusa.com		

China

Phone		E-Mail	sales.china@lpkf.com	Website	www.lpkf.cn
Sales	+86 (22) 2378-5318				
Service	+86 (22) 2378-5328				

Japan

Phone	+81 47 432-5100	E-Mail	info.japan@lpkf.com	Website	www.lpkf.jp
Fax	+81 47 432-5104				

South Korea

Phone	+82 (31) 689 3660	E-Mail	sales.korea@lpkf.com	Website	www.lpkf.kr
Fax	+82 (31) 478 5988				

Worldwide LPKF Representatives

LPKF AG has a global sales network. An overview of all LPKF representatives can be found on page 57.

For more information, please visit our website at www.lpkf.com.



Table of Contents

Welcome to LPKF		LPKF Drilling and Milling Tools for LPKF ProtoMats	31
Rapid PCB Prototyping	2		
PCB Prototyping Equipment in a 360-degree View	4	Systems and Processes for Manufacturing Component Population	33
Rapid PCB Prototyping – The Faster Way to Create Circuit Boards	5	LPKF EasyContac – Manual Through-Hole Plating of Double-Sided PCBs	34
LPKF Circuit Board Plotters	6	LPKF ProConduct – Reliable Through-Hole Plating for PCB Prototyping with Conductive Paste	34
Overview of Application Areas	8	LPKF Contac S4 – Table-Top Through-Hole Electroplating	35
LPKF ProtoMat E44 – Compact, Easy to Use, Precise	10	LPKF MultiPress S – A Press for Multilayer Production	36
LPKF ProtoMat S64 – An All-rounder for Rapid PCB Prototyping	11	LPKF ProMask and ProLegend – Solder Masks and Legend Printing	37
LPKF ProtoMat S104 – Specialist for RF and Microwave Applications	12	LPKF ProtoPrint S4 – SMT Stencil Printer for PCB Prototypes	38
Comparison of LPKF Circuit Board Plotters	13	LPKF ProtoPlace E4 – Fast and Easy Positioning	39
Innovative Laser Technology for Rapid PCB Prototyping	14	LPKF ProtoPlace S4 – SMD Pick & Place Machine for PCB Prototypes and Low Volumes	40
Laser Micro Material Processing	15	LPKF ProtoFlow S4 – Reflow Oven for Lead-Free Soldering in the Lab	42
LPKF ProtoLaser ST – Tabletop System for Laser Structuring of PCBs	17	Accessories for SMT Systems and Processes	43
LPKF ProtoLaser S4 – Laser Processing of PCBs	18	Scientific Prototyping – Laser Systems for Development and Science	46
LPKF ProtoLaser U4 – Multipurpose Tool for the Electronics Lab	19	Laboratory Laser Systems for Demanding Applications	48
LPKF ProtoLaser R4 – Specialist for Material-friendly Processing	20	Micro Material Processing Specialist	52
LPKF CircuitPro – Smart Software with Intuitive Operation	21	LPKF Service & Support – Secure Your Investment	55
Accessories for LPKF Circuit Board Plotters and ProtoLasers	25	LPKF International Contacts	57
Operating Materials for LPKF Circuit Board Plotters and ProtoLasers	28	Notes	59
		Legal Information	60

Welcome to LPKF Rapid PCB Prototyping

In this catalog, you will find everything you need for rapid prototyping of printed circuit boards: machines, tools, consumables, accessories, and software. With this, you can manufacture single-sided, double-sided, or even multilayer PCBs in-house.

Why Inhouse Prototyping? Because It's Fast, Easy and Efficient.

With increasing functionality, miniaturization and the demand for geometric precision, the requirements for prototyping are getting stricter. In line with the innovative power of the electronics industry, it makes sense to quickly turn developers' ideas into functional models. With LPKF's equipment, you can implement your PCBs directly and precisely, on-site in your own laboratory.

In PCB prototyping, there are many reasons for manufacturing assemblies quickly, cost-effectively and, if possible, without much additional effort:

- Sensitive data and circuits remain in the company's own laboratory.
- Iteration steps can be created at short notice – no waiting for suppliers, no additional costs due to additional external (express) manufacturing.
- Developers with their own prototype production can influence the overall process.
- The time-to-market is reduced considerably according to the number of PCB samples – often a decisive competitive advantage.



The space required for in-house production equipment is less than commonly thought. In particular, chemical-free processes have a low space requirement because the expense is low compared to multi-stage bath systems, which require the monitoring or disposal of the chemicals and have higher occupational health and safety requirements.

LPKF systems can be used to produce single- or double-sided PCBs, multilayers and rigid or flexible PCBs. In addition, the systems can create high-power circuits, as well as RF and microwave PCBs, allowing extremely exciting product options for electronics.

Thanks to our own sophisticated software, the operation of the systems is extremely simple. The user is guided through the individual process steps in such a way that PCB prototyping can be realized without extensive prior training.

And How Does the Production Process Work?

Our LPKF TechGuide PCB Prototyping explains the individual process steps of PCB prototyping and helps with tips and tricks for the practical use of LPKF systems. Feel free to request the TechGuide or talk to our experts.

About LPKF

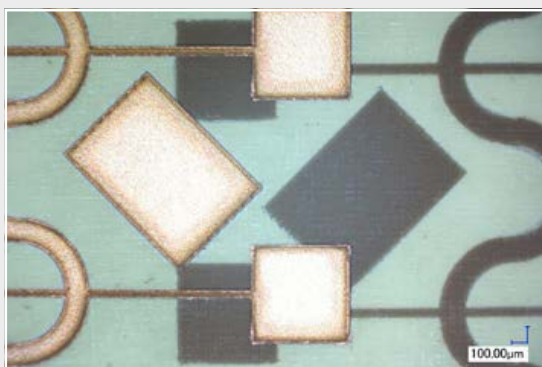
With decades of experience and many customized solutions, LPKF is the global market leader in rapid PCB prototyping, especially for PCBs. About 700 employees around the globe provide professional sales and service support.

Solutions for R & D Special Applications

You want to use special or sensitive materials? Even special applications, which are often produced by service providers with considerable effort, can be produced effectively in the company's own laboratory with LPKF in-house equipment.

An example: The LPKF ProtoLaser R4 paves the way for forward-looking innovations with the latest materials from research and development. The system is designed for special applications – such as research with thermally sensitive materials or with very robust materials – but the system can also process PCBs.

Picosecond-short laser pulses allow the structuring of sensitive substrates, as well as the cutting of hardened or fired technical substrates. The ProtoLaser R4 precision laser system thus opens up new microprocessing possibilities for experiments with completely new scientific materials in the company's own laboratory.



Thin film double-sided structured with LPKF ProtoLaser R4



Double-sided FR4 material processed with LPKF ProtoMat S104

PCB Prototyping Equipment in a 360-degree View

For development departments or institute laboratories that want to carry out their PCB prototyping in-house, LPKF has the complete range of equipment in its portfolio: from circuit board plotters for drilling and structuring to SMT stencil printers and reflow ovens to laser machines.

To give you a quick overview of the prototyping portfolio, we have set up a virtual showroom for you. It is also an informative alternative to visiting our booths or demo lab in times of travel restrictions.

You can visit the showroom simply via the link using your browser, which means you do not need any special software. Click through the exhibition and get to know the right systems for your laboratory and applications the quick way. In addition to the range of products that has been tried and tested for years, four thematically structured rooms present systems that have only recently been launched on the market and our innovative software solutions:

- PCB Basic Line
- Multilayer Production
- RF Prototyping
- Micro Material Processing

In the showroom display, the real sizes of the particularly compact LPKF laboratory systems can be clearly seen. Technical information on the individual systems is available, as are demo videos on the application areas – all in English. In this way, many questions about PCB prototyping can be quickly clarified. For any unanswered questions, as well as concrete application possibilities, you can reach our experts via a contact form.



Rapid PCB Prototyping – The Faster Way to Create Circuit Boards

Speeding up development means getting to market more quickly. With the rapid PCB prototyping solutions from LPKF, this is easy to accomplish. From mechanical or laser structuring of the base material to production of the complex multilayer prototype. The entire prototyping cycle – from design to production and optimization – can be run through in a single day using LPKF products.

PCB Structuring

LPKF ProtoMats are setting global standards in precision, flexibility, and user-friendliness. LPKF circuit board plotters are indispensable for fast in-house production of PCBs – for quantities ranging from one-offs for development projects to small batches. They are ideal for high-capacity, analog, digital, RF, and microwave applications.

Made in Europe: for over four decades now, LPKF circuit board plotters have served as a benchmark in the milling, drilling, and contour milling of PCBs. Take for example LPKF ProtoMat S104: its high-capacity spindle and vacuum table it is also suitable for RF applications and thin laminates as well as substrates with a sensitive surface (PCBs up to 100 µm on FR4 18/18 Cu). The system software also takes into consideration special requirements of RF materials.

More demanding production methods can be handled with another LPKF product group: PCB structuring and micro material processing with LPKF's ProtoLaser S4, ProtoLaser U4, and the compact table-top laser system LPKF ProtoLaser ST are setting new standards in quality, speed, and materials capabilities. You still don't need to be afraid of our laser systems: thanks to our software, the operation is as simple as the operation of mechanical PCB plotters.

Multilayers, Through-Hole Plating, and Assembly

LPKF circuit board plotters are ideal for rapid prototyping of multilayer PCBs. Combined with a multilayer press such as the LPKF MultiPress and a through-hole plating system, they can create high-grade multilayer PCBs for subsequent assembly with the

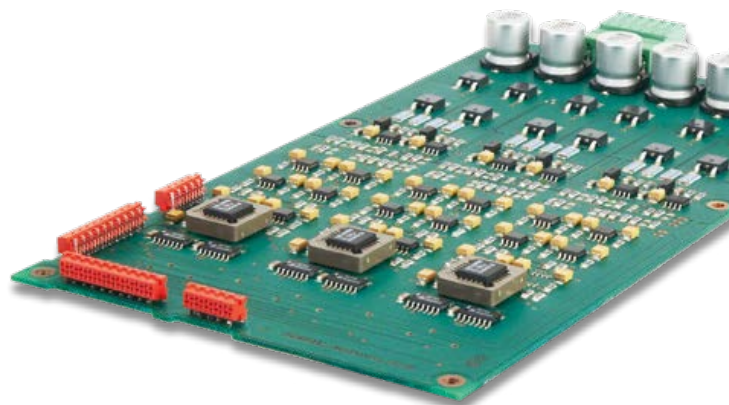
LPKF ProtoPlace. The advantages are especially evident in the development phase for complex designs.

Versatile Software

Each LPKF structuring system is delivered with a comprehensive software package that has been optimized for ease of use, maximum quality, and rapid generation of results. LPKF CircuitPro supports all standard CAD data file formats for import and transmits the production data to the structuring system.

Other Applications

Along with being able to produce PCBs in record time, LPKF systems have proven their versatility in a wide variety of applications: from housings, front panels, aluminum and plastics processing, depaneling of assembled boards, and cutting and engraving of plastic films to geometrically precise structuring of ceramic RF boards.





LPKF Circuit Board Plotters

Fast, precise, and easy – LPKF’s circuit board plotters have been meeting these user demands for four decades.

In-House Production of PCB Prototypes and Small Batches

LPKF’s ProtoMat systems are available in three different series. The ProtoMat E44 supplies LPKF quality at an entry-level price – without extra options and automation, but still offers the highest quality basic functionality.

The ProtoMat S systems are largely automated. They feature automatic tool changing, and can be used for other applications through a vacuum table and a

vision system. The systems feature a stable granite machine base and an attractive protection housing. The highly flexible system software LPKF CircuitPro allows for intuitive operation. A parameter library for various materials supports the user-friendliness. If necessary, the integrated Process Guide leads the user step by step through the process.

Compact for any task: all ProtoMat systems only need one software-controlled user-optimized LPKF vacuum extraction system, power source, and compressed air.



High-Quality Equipment for New Applications

Even the simplest system, the ProtoMat E44, can mill, drill and route single- and double-sided PCBs with high quality.

The key features of all LPKF ProtoMats include:

Circuit board plotter spindles: The LPKF ProtoMats come with different milling spindles that rotate at speeds of 40 000 RPM to 100 000 RPM (controlled). A high spindle speed enables the selection of finer tools, faster processing, increases resolution, and improves side wall quality.

Tool change: The ProtoMat E44 has collet chucks for manual tool changing, whereas the other ProtoMats independently select the tools. This allows for highly automated, unsupervised operation and slashes processing times. Another feature of the automatic

tool changer is the integrated automatic milling depth adjustment device.

Camera system: With the integrated registration camera system, the LPKF ProtoMat E44 achieves a precision of $\pm 20 \mu\text{m}$ for processing of double-sided PCBs with fiducial marks. A camera increases this precision even more: in case of S series ProtoMats, it detects registration marks or geometric features of the board and automatically adjusts the milling width – for fully automated processing.

Vacuum table (only ProtoMat S series):

The integrated vacuum table facilitates processing of flexible materials and securely holds small workpieces down on the working surface.

Protective housing: The ProtoMat housing makes processing especially comfortable. It seals the working chamber off from the environment and reduces noise emissions.

Overview of Application Areas

Milling/Drilling of Single- and Double-Sided PCBs

The main application for LPKF ProtoMats is production of PCB prototypes with FR4 substrates by milling of insulation channels, drilling of mounting and contact holes, and routing of the board out of the base material.

Milling/Drilling of RF and Microwave Substrates

RF and microwave prototypes require extremely precise structuring of special base materials. High-speed spindles produce these fine structures with 90° edges and minimal penetration into the substrate.

Milling/Drilling of Multilayers with up to Eight Layers

LPKF processes can be used to manufacture multilayer prototypes with up to eight layers. For this, a fiducial camera is recommended for precise positioning.

Milling of Flexible and Rigid-flex PCBs

A vacuum table holds flexible printed circuit board materials securely against the working surface. A high spindle speed supports the gentle structuring and depaneling of these sensitive boards.

Contour Milling of PCBs

When there are multiple PCBs arranged on a base material, routing contours with break-out tabs allow for depaneling without causing damage.

Engraving of Front Panels and Labels

LPKF circuit board plotters can engrave flat front panels and labels made of plastic, plexi glass, aluminum, brass, and other materials with high precision.

Routing of Cut-outs in Front Panels

Unlike engraving, this involves penetration of the material.

Processing of Housings

LPKF circuit board plotters with adjustable Z-axes (maximum travel: 26 mm) can be used to manufacture planar and nonplanar housing parts.

Milling of Plastics

Thanks to the 2.5-dimensional capabilities, parts or mounting brackets can be produced from suitable plastic block materials.

Milling of SMT Solder Paste Stencils

With the circuit board plotter, polyimide stencils for solder paste printing can be manufactured directly from CAD data.

Milling of Solder Frames

Solder frames hold the boards in place during the soldering process. LPKF circuit board plotters with stepper motor-controlled Z-axes are ideal for milling of the fixtures in relatively thick temperature-resistant material.

Reworking of PCBs

LPKF ProtoMats can be used for the efficient depaneling of assembled (populated) and bare (unpopulated) boards as well as for PCB reworking.

Drilling of Test Adapters

With an LPKF ProtoMat with high-speed spindle and stepper motor-controlled Z-axis, adapter plates for a bed of nails tester can be drilled perfectly.

Inspection Templates

LPKF circuit board plotters are ideally suited to precise structuring of inspection templates.

Depaneling of Assembled Boards

Cutting of tabs or full-section cuts can be performed as long as the cutting channel can be accessed by the ProtoMat's tool.

Ultrafine Conductor Structuring

For high-resolution, highly integrated electronic components, a large number of densely packed connector terminals must be contacted. The very fine (<200 μm) conductor structures require high spindle speeds or laser tools.

Metal Layers on Ceramics

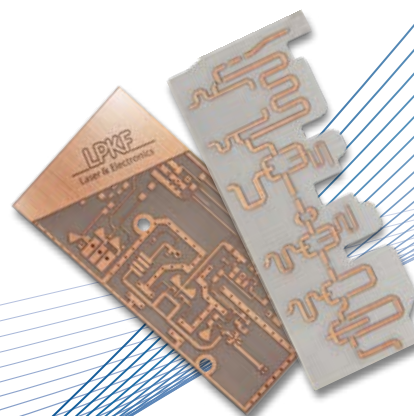
Metal layers on fired ceramics are sensitive to mechanical loads, but they also place high demands on the tools. This is where the laser shines because it works without exerting any mechanical forces.

Dispensing

The optional compressed air-assisted dispenser applies the solder paste to the board with high positioning accuracy.

Application	ProtoMat			Application Tips
	E44	S64	S104	
Milling/drilling of single- and double-sided PCBs	•	•	•	
Milling/drilling of RF and microwave substrates	–	•	•	LPKF recommends the S104 for RF/microwave layouts as the main applications
Milling/drilling of multilayers with up to eight layers	–	•	•	LPKF recommends the S64 and S104 due to the high rotation speed of the milling motor
Milling of flexible and rigid-flex PCBs	–	•	•	Flexible substrates necessitate a vacuum table, standard feature for the S64, and the S104
Contour routing of PCBs	•	•	•	
Engraving of front panels and labels	•	•	•	
Routing of cut-outs in front panels	–	•	•	LPKF recommends the S104, or the S64 for milling of aluminum front panels
Processing of housings	–	•	•	LPKF recommends the S64 and the S104 for the Z-axis control required for plastic and aluminum housings
Milling of plastics	•	•	•	
Milling of SMT solder paste stencils	–	•	•	Flexible substrates necessitate a vacuum table, standard feature for the S64 and the S104
Milling of solder frames	–	•	•	LPKF recommends the S64 and the S104 due to the stepper motor-controlled milling width adjustment
Reworking of PCBs	–	•	•	LPKF recommends the S64, and the S104 due to the optical position detection feature and the vacuum table
Drilling of test adapters	–	•	•	LPKF recommends the S64 or the S104 due to the stepper motor-controlled Z-axis.
Inspection templates	–	•	•	
Depaneling of assembled boards	–	•	•	LPKF recommends the S64 or the S104 due to the Z-axis control.
Dispensing	–	•	•	

The camera system is standard equipment on all LPKF ProtoMats.



LPKF ProtoMat E44 – Compact, Easy to Use, Precise

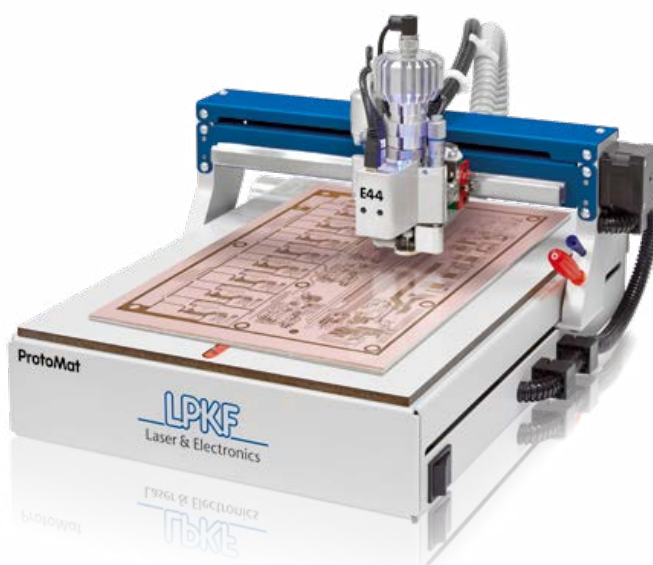
LPKF ProtoMat is the affordable entry-level product for PCB prototyping. It offers simple operation, is compact and optimal for training purposes and irregular use. Of course all with the top-of-the-line results.

The system can structure single- or double-sided circuit boards, drill holes, perform contour milling, and even engrave front panels. Tool exchange is manual with precise height adjustment per micrometer screw. A camera helps the ProtoMat E44 achieve better positioning accuracy with double-sided boards. In addition, the measuring camera enables easy adjustment of the milling depth. A spindle speed of 40 000 RPM provides for a higher working speed.

ProtoMat E44 is delivered with the basic version of the CAM software LPKF CircuitPro Basic. Thanks to its intuitive guidance through menus, its operation is child's play. The user makes a selection, the software generates individual processing steps and prepares the production data. Finally, LPKF CircuitPro guides the user through the process step by step.

The software is easily understood without special training and thus perfect for occasional use.

- Table system barely larger than a DIN A3 sheet
- Spindle speed of 40 000 RPM
- Easy handling of tool exchange
- With LPKF CircuitPro Basic software
- Protective housing available



LPKF ProtoMat E44 (Part no.: 10052739)

Max. layout area (X/Y/Z)	305 mm x 229 mm x 5 mm (12" x 9" x 0.2")
Max. material size (X/Y/Z)	310 mm x 230 mm x 10 mm (12" x 9" x 0.4")
Mechanical resolution (X/Y)	0.8 µm (0.04 mil)
Repeatability	± 5 µm (± 0.2 mil)
Precision of front-to-back alignment	± 0.02 mm (± 0.8 mil)
Milling spindle	40 000 RPM, software-controlled
Tool change	Manual
Milling width adjustment	Manual, with software-supported measurements
Tool holder	3.175 mm (1/8")
Drilling speed	100 holes/min
Travel speed (X/Y)	Max. 100 mm/s (4"/s)
Dimensions (W x H x D)	370 mm x 300 mm x 450 mm (14.6" x 11.8" x 17.7")
Weight	15 kg (33 lbs)
Power supply	100 – 240 V, 50 – 60 Hz, 120 W
Environmental conditions	15 °C – 25 °C; max. 60% air humidity
Software (starting on p. 21)	LPKF CircuitPro Basic
Options and accessories (starting on p. 25)	Dust extraction unit; protective housing

Technical specifications subject to change.



LPKF ProtoMat S64 – An All-rounder for Rapid PCB Prototyping

LPKF ProtoMat S64: fast and reliable basic system for almost any application – even for multilayer production. The milling spindle with a high rotation speed that requires almost no maintenance produces fine structures as small as 100 µm. Housing parts can be processed in up to 2.5 dimensions. The comprehensive features (including a vacuum table) can be expanded with an optional dispenser as well as five additional tool positions making ProtoMat S64 a perfect addition to any development environment.

Fast and Automatic

The milling spindle with a speed of up to 60 000 RPM offers quick processing and high geometric accuracy. The spindle and milling depth sensor require almost no maintenance due to their self-cleaning functionality. Quick setup and operator-free work are possible thanks to automatic tool change and automatic milling width adjustment. Sensor ensure correct milling depth; the integrated camera monitors the tool change.

Integrated, Intuitive Operating Software

The LPKF CircuitPro Basic system software is extremely flexible, easy to operate and features, among others, a parameter library for various materials. If necessary, the integrated Process Guide leads the user step by step through the processing.

- Fully automatic operation incl. automatic tool change
- Low-maintenance high-speed milling spindle
- Intuitive, integrated system software
- Camera controlled fiducial recognition and milling depth/width control
- Granite base for highest accuracy results



LPKF ProtoMat S64 (Part no.: 10066474)

Max. layout area (X/Y/Z)	229 mm x 305 mm x 8 mm (9" x 12" x 0.3")
Max. material size (X/Y/Z)	250 mm x 330 mm x 26 mm (9.8" x 13" x 1")
Mechanical resolution (X/Y)	0.5 µm (0.02 mil)
Repeatability	± 5 µm (± 0.2 mil)
Milling spindle	Max. 60 000 RPM, software-controlled
Tool change	Automatic, 15 positions + 5 optional
Camera accuracy	1.8 µm/Pixel
Milling width adjustment	Automatic, micro switch ± 1 µm (0.04 mil)
Tool holder	3.175 mm (1/8")
Drilling speed	100 strokes/min
Travel speed (X/Y)	150 mm/s (6"/s)
Dimensions (W x H x D), weight	680 mm x 560 mm x 800 mm (26.8" x 22.0" x 31.5"), 95 kg (210 lbs)
Power supply	100 – 240 V, 50 – 60 Hz, 250 W
Compressed air supply	Min. 6 bar; 75 l/min @ 6 bar (min. 90 PSI; 75 l/min @ 90 PSI)
Environmental conditions	20 °C – 25 °C; max. 90 % air humidity
Solder paste dispense rate (optional)	≥ 0.3 mm (≥ 0.011") (solder point), ≥ 0.4 mm (≥ 0.015") (pad)
Software (starting on p. 21)	LPKF CircuitPro Basic
Options and accessories (starting on p. 25)	Dust extraction unit, compressor, status light, measuring microscope, dispenser

Technical specifications subject to change.



LPKF ProtoMat S104 – Specialist for RF and Microwave Applications

With comprehensive features for electronics labs: The LPKF ProtoMat S104. Thanks to the high-performance spindle and a vacuum table, it is also suitable for RF applications, thin laminates as well as substrates with a sensitive surface (conducting path widths up to 100 μm on FR4 18/18 Cu). In addition, the system processes front panels and housings as well as populated PCBs in 2.5D and provides deep etching in circuit boards.

Fast, Precise, and Fully Automatic

Drilling and milling of even very fine structures: ProtoMat S104 is fast and very precise with a rotation speed of up to 100 000 RPM, high stroke speed and high mechanical resolution. The high-frequency spindle and milling depth sensor are low-maintenance since they are self-cleaning. Easy-to-use = everything is automatic: material and copper thickness measurement, milling width adjustment, tool change. The solder paste application with the dispenser is carried out without any additional data processing. Quick setup and operator-free workflows ensure short process times.

Intuitive: CircuitPro Advanced Software

The system software is highly flexible and easy to use, among others due to the parameter library for materials. The calculations meet the high requirements of RF applications.

- Top fully automated model
- Available speed of up to 100 000 RPM
- 20 tool change positions
- Optical fiducial recognition
- Integrated vacuum table
- Easy to use package
- Granite base for highest accuracy results



LPKF ProtoMat S104 (Part no.: 10066476)

Max. layout area (X/Y/Z)	229 mm x 305 mm x 8 mm (9" x 12" x 0.3")
Max. material size (X/Y/Z)	250 mm x 330 mm x 26 mm (9.8" x 13" x 1")
Mechanical resolution (X/Y)	0.5 μm (0.02 mil)
Repeatability	$\pm 5 \mu\text{m}$ (± 0.2 mil)
Milling spindle	Max. 100 000 RPM, software-controlled
Tool change	Automatic, 20 positions
Camera accuracy	1.8 μm /Pixel
Milling width adjustment	Automatic, micro switch $\pm 1 \mu\text{m}$ (0.04 mil)
Tool holder	3.175 mm (1/8")
Drilling speed	100 strokes/min
Travel speed (X/Y)	150 mm/s (6"/s)
Dimensions (W x H x D), weight	680 mm x 560 mm x 800 mm (26.8" x 22.0" x 31.5"), 95 kg (210 lbs)
Power supply	100–240 V, 50–60 Hz, 250 W
Compressed air supply	Min. 6 bar; 75 l/min @ 6 bar (min. 90 PSI; 75 l/min @ 90 PSI)
Environmental conditions	20 °C–25 °C; max. 90% air humidity
Solder paste dispense rate (optional)	≥ 0.3 mm (≥ 0.011 ") (solder point), ≥ 0.4 mm (≥ 0.015 ") (pad)
Software (starting on p. 21)	LPKF CircuitPro Advanced
Options and accessories (starting on p. 25)	Dust extraction unit, compressor, status light, measuring microscope, dispenser

Technical specifications subject to change.



Comparison of LPKF Circuit Board Plotters

Performance and Features

Property	ProtoMat E44	S64	S104
Max. layout area (X/Y)	305 mm x 229 mm x 5 mm (12" x 9" x 0.2")	305 mm x 229 mm x 8 mm (12" x 9" x 0.3")	305 mm x 229 mm x 8 mm (12" x 9" x 0.3")
Mechanical resolution (X/Y)	0.8 µm (0.04 mil)	0.47 µm (0.02 mil)	0.47 µm (0.02 mil)
Travel speed (X/Y)	Max. 100 mm/s (4"/s)	150 mm/s (6/s)	150 mm/s (6/s)
Repeatability	± 5 µm (± 0,2 mil)	± 5 µm (± 0,2 mil)	± 5 µm (± 0,2 mil)
Max. material size (X/Y/Z)	310 mm x 230 mm x 10 mm (12" x 9" x 0.4")	330.5 mm x 249 mm x 26 mm (13" x 9.8" x 1")	330.5 mm x 249 mm x 26 mm (13" x 9.8" x 1")
Mechanical resolution (Z)	0.85 µm (0.033 mil)	0.2 µm (0.008 mil)	0.2 µm (0.008 mil)
Travel speed (Z)	20 mm/s	25 mm/s	25 mm/s
Spindle speed	40 000 RPM	60 000 RPM	100 000 RPM
Drilling speed	100 strokes/min	100 strokes/min	100 strokes/min
Temperature sensor	–	•	•
Dispensing optionally prepared	–	•	•
Software LPKF CircuitPro	Basic (Advanced optional)	Basic (Advanced optional)	Advanced
Automatic tool change	–	15 + 5 optional	20
Vacuum table	–	•	•
Optical fiducial recognition	•	•	•
Protective housing	Optional	•	•
Automatic milling width adjustment	–	•	•
Sensor-controlled milling width adjustment	–	•	•
Working depth limiter	Mechanical, manual	Mechanical, software-controlled	Mechanical, software-controlled
Status light	–	Optional	Optional
Ports	2 x USB	2 x USB	2 x USB
Footprint (W x D)	370 mm x 450 mm (14.6" x 17.7")	670 mm x 840 mm (26.4" x 33")	670 mm x 840 mm (26.4" x 33")
Weight	15 kg (33 lbs)	95 kg (210 lbs)	95 kg (210 lbs)
Compressed air supply required?	Not required	Min. 6 bar 35 l/min (min. 90 PSI; 35 l/min)	Min. 6 bar 35 l/min (min. 90 PSI; 35 l/min)

Technical specifications subject to change.

• = Standard – = Not available Optional = Optionally available as upgrade or accessory





Innovative Laser Technology for Rapid PCB Prototyping

LPKF's micro material processing options for PCB prototyping also includes non-contact laser processes – from structuring and processing of printed circuit boards to processing of special materials.

LPKF offers four laser systems for use in development environments. The compact ProtoLaser ST tabletop laser system impresses with its fast and material-friendly structuring of circuit boards and can be optimally complemented with an LPKF circuit board plotter. The ProtoLaser S4 is an ideal system for the laser structuring and laser cutting of laminated circuit boards.

The ProtoLaser U4 can process a wide range of materials thanks to its UV laser with a finer focus. It can perform both drilling and full section cuts, as well as structure-defined channels in material. The ProtoLaser R4 is the specialized system for use in research with special applications on sensitive or very robust materials.

LPKF ProtoLasers are compact and economical. All they need is a power outlet and compressed air, and they fit through any lab door. All four laser systems have an

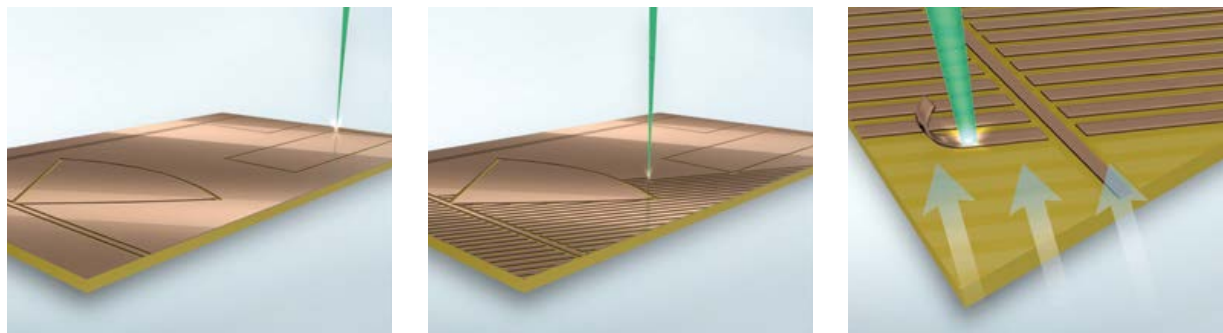
integrated PC, making them quick and easy to install. They are delivered with the intuitive and powerful LPKF CircuitPro CAM software. After just a short introduction, the user can achieve impressive results.

The ProtoLaser ST contains LPKF CircuitPro Basic. This version is designed to process single or multiple layer printed circuit boards. The other laser systems are supplied with LPKF CircuitPro Advanced. In addition to PCB processing, this version is also designed for processing flex or ceramic materials.

The LPKF laser systems are equipped with a vacuum table and a vision system and operate according to laser class 1 (no additional protective measures required).

Laser Micro Material Processing

Laser processes offer numerous advantages over mechanical processes. The laser beam works in a non-contact manner without generating any mechanical forces on the material being processed.



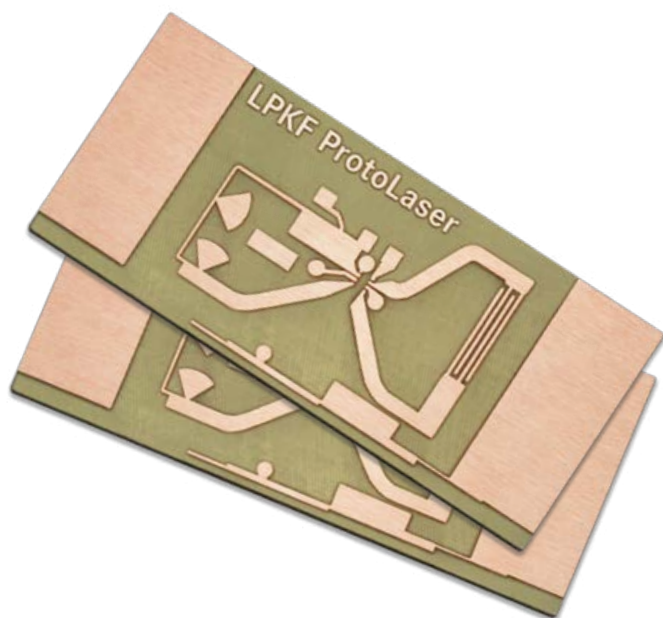
Laser systems are perfect for structuring circuit boards. A suitable selection of the laser wavelength as well as process control mean that the structuring can be adapted to numerous materials with various absorption rates. This allows for the processing of standard as well as irregular material combinations, and prevent substrate damage.

Laser systems allow for cutting channels up to the minimum width of 15 μm . This precision is an advantage especially with corner radii and steep cutting edges, which speaks for the laser's suitability for RF applications. The structuring of circuit boards with laser systems is similar to mechanical milling: The laser beam removes copper without residue thus creating isolation channels and conducting paths. The results are highly convincing with their sharp edges and precise geometries.

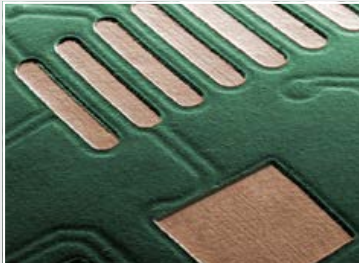
A process patented by LPKF ensures the clearing of large copper surfaces: The laser cuts the surface into thin stripes and dissolves them by heating the organic substrate. This process reduces the processing time drastically.

LPKF ProtoLaser S4 and U4 can cut common circuit board materials. Precise complete cuts through thin materials are possible. The laser tool is also highly convincing when cutting and drilling through rigid-flex circuit boards. In case of thicker materials, breakout tabs support the effectiveness of the laser process.

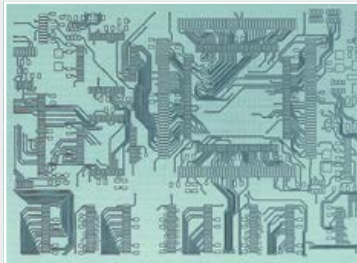
ProtoLaser R4 has proven extremely advantageous in the processing of micro materials. Its very short laser pulses mean that the heat input into the processed material can be controlled precisely. This allows for fine structures in thermally very sensitive materials.



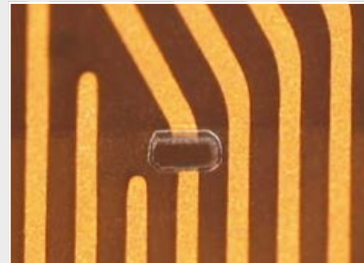
Laser Applications



Processing of solder mask openings



Direct exposure of resists (ultrafine conductor production)



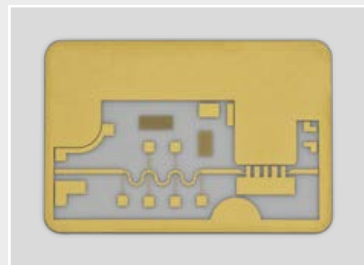
PCB reworking



Cutting of mounting holes



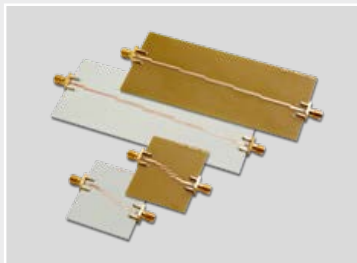
Processing of thin flexible material



Processing of fired ceramic



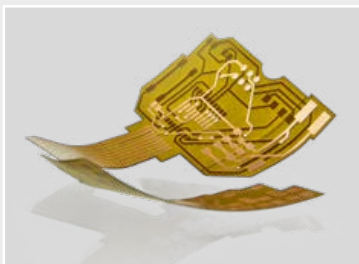
Processing of FR4 circuit boards



Processing of ceramics-filled materials



Processing of PTFE-filled materials



Processing of flexible and foil materials

LPKF ProtoLaser ST – Tabletop System for Laser Structuring of PCBs

The upgrade for your lab: Surfaces can be processed safely, precisely and suitably for the material with the compact LPKF ProtoLaser ST meaning that laser-structured circuit boards with exact geometries can be manufactured in only a few minutes. This is possible due to the combination of a better cutting capacity and a higher cutting speed. The safe lab system for the processing of FR4 and sensible RF materials will convince you with its amazing performance. Due to its compact tabletop format it can be used in any lab.

LPKF ProtoLaser ST allows for efficient prototyping of complex digital and analogue circuits, RF and microwave circuit boards. Without any tool wear, the laser system also processes demanding materials, and is ideally suited for the structuring of single- or double-sided laminated materials. Even flexible materials and foils can be freely positioned and exactly fixed.

The latest generation of the CAM and machine software CircuitPro Basic has been adapted to the further processing of drilled and cut-out circuit boards. The software and the integrated camera system allow for exact positioning. For operation, the compact table laser system requires only a power plug and compressed air.

- Quick surface processing on all common circuit board materials
- Exact geometries by means of a contactless, scanner-based process
- Compact as a tabletop system and safe: lab-ready, laser class 1
- Intelligent, intuitive system software LPKF CircuitPro Basic



LPKF ProtoLaser ST (Part no.: 10090128)

Max. layout area and material size (X/Y/Z)	229 mm x 305 mm x 7 mm (9" x 12" x 0.28")
Laser wavelength	1064 nm
Max. laser power	16 W
Laser pulse frequency	25 – 400 kHz
Diameter of focused laser beam	20 ± 2 µm (0.78 ± 0.08 mil)
Structuring speed	8.5 cm ² /min (1.3 in ² /min) ^a on laminated substrates 18 µm (0.5 oz) Cu
Minimum line/space	100 µm / 50 µm (3.9 mil / 2 mil) ^a on FR4 18 µm (0.5 oz) Cu
Positioning accuracy in the scan field	± 10 µm (± 0.39 mil)
Repeatability in the scan field	± 1.8 µm (± 0.07 mil)
Dimensions (W x H x D)	725 mm x 665 mm x 840 mm (28.6" x 26.2" x 33.1")
Weight	115 kg (254 lbs)
Power supply	115 – 230 V, 50 – 60 Hz, 500 W
Compressed air supply	Min. 6 bar; 20 l/min (min. 87 PSI; 20 l/min)
Cooling	Air-cooled
Ambient temperature; humidity	22 °C ± 2 °C (71.6 °F ± 4 °F); < 60%
Software (starting on p. 21)	LPKF CircuitPro Basic
Options and accessories (starting on p. 25)	Dust extraction unit, compressor, starter set

^a Depending on material and laser beam parameters

Technical specifications subject to change.



LPKF ProtoLaser S4 – Laser Processing of PCBs

With the LPKF ProtoLaser S4, only a couple of minutes are needed from the layout to a structured circuit board – with exact geometries and drill holes for through-hole plating or cutouts. ProtoLaser S4 uses a laser source (532 nm, green) that, despite its high cutting capacity for copper, places hardly any stress on the substrate. Therefore, this lab laser can also safely process copper surfaces with inhomogeneities of up to 6 µm and is also suitable for the production of galvanic through-hole plating circuit boards as well as multilayer components. Fast processing, a wide choice of materials, safe process results in the lab!

ProtoLaser S4 is a solution for efficient prototyping of complex digital and analogue circuits, RF and microwave circuit boards with a size of up to 229 mm x 305 mm (9" x 12"). It is ideal for the production of single- or double-sided circuit boards, antennas, filters, and numerous applications featuring precise, steep flanks. In addition, it provides exact geometries on technical ceramic materials.

This laser system features the Advanced version of the LPKF CircuitPro software, which boasts various handy extras in addition to the necessary features (see page 21).

- Surface processing, suitable for the circuit, precise full section cuts and drill holes
- Compact and safe: lab-ready
- Optimized for circuit board materials from the electroplating process
- Prototyping and on-demand processing of custom small batches



LPKF ProtoLaser S4 (Part no.: 10055359)

Max. layout area (X/Y/Z)	229 mm x 305 mm x 7 mm (9" x 12" x 0.28")
Max. material size (X/Y/Z)	239 mm x 315 mm x 7 mm (9.4" x 12.4" x 0.28")
Laser wavelength	532 nm
Max. laser power	12 W
Laser pulse frequency	25 – 300 kHz
Diameter of focused laser beam	20 ± 2 µm (0.78 ± 0.08 mil)
Structuring speed	12 cm ² /min (1.9 in ² /min) ^a on laminated substrates 18 µm (0.5 oz) Cu
Minimum line/space	75 µm / 25 µm (2.9 mil / 0.9 mil) ^a on FR4 18 µm (0.5 oz) Cu
Positioning accuracy in the scan field	± 10 µm (± 0.39 mil)
Repeatability in the scan field	± 2.2 µm (± 0.09 mil)
Dimensions (W x H x D)	910 mm x 1650 mm x 795 mm (35.8" x 64.9" x 31.3") ^b
Weight	350 kg (772 lbs)
Power supply	110–230 V, 50–60 Hz, 1.5 kW
Compressed air supply	Min. 6 bar; 185 l/min (min 87 psi; 185 l/min)
Cooling	Air-cooled (internal cooling cycle)
Ambient temperature; humidity	22 °C ± 2 °C (71.6 °F ± 4 °F); < 60 %
Software (starting on p. 21)	LPKF CircuitPro Advanced
Options and accessories (starting on p. 25)	Dust extraction unit, compressor, starter set

^a Depending on material and laser beam parameters

^b Height with open hood: 1765 mm (69.5")



LPKF ProtoLaser U4 – Multipurpose Tool for the Electronics Lab

One System, Multiple Applications

The LPKF ProtoLaser U4 with integrated UV laser is capable of processing a wide variety of materials. It is easy to install and even easier to use. The high pulse energy of the UV laser leads to a residue-free ablation process, resulting in geometrically precise contours.

The LPKF ProtoLaser U4 can structure or cut diverse materials quickly and cleanly. The laser wavelength used makes the UV laser a truly multifunctional tool. A UV laser beam can cut individual boards out of large boards with high precision and no stress, drill holes and microvias, and create openings in solder masks. It can cut and structure LTCCs, fired ceramics, ITO/TCO substrates, delicate prepregs, and laminated materials like FR4- or RF-specific substrates.

The processing of various materials is supported by the CircuitPro Advanced software. An extensive materials library supplies the laser parameters for key materials. Because the ProtoLaser U4 works without material contact, tooling costs are a thing of the past. Micro material processing thus benefits from the fine laser beam diameter, the extremely precise focusing along the Z-axis, and the exact control of the processing positions.

- Excellent quality and high material variety due to the UV laser wavelength
- Laser-stabilized in the low energy area for the processing of thin and sensible materials
- Power measurement on the substrate level for process control
- Compact and safe: lab-ready



LPKF ProtoLaser U4 (Part no.: 10055358)

Max. layout area (X/Y/Z)	229 mm x 305 mm x 7 mm (9" x 12" x 0.28")
Max. material size (X/Y/Z)	239 mm x 315 mm x 7 mm (9.4" x 12.4" x 0.28")
Laser wavelength	355 nm
Max. laser power	5.7 W
Laser pulse frequency	25 – 300 kHz
Diameter of focused laser beam	20 ± 2 μm (0.78 ± 0.08 mil)
Structuring speed	5.5 cm ² /min (0.9 in ² /min) ^a on laminated substrates 18 μm (0.5 oz) Cu
Minimum line/space	50 μm / 20 μm (2.0 mil / 0.8 mil) ^a on FR4 18 μm (0.5 oz) Cu
Positioning accuracy in the scan field	± 10 μm (± 0.39 mil)
Repeatability in the scan field	± 2.2 μm (± 0.09 mil)
Dimensions (W x H x D)	910 mm x 1650 mm x 795 mm (35.8" x 64.9" x 31.3") ^b
Weight	350 kg (772 lbs)
Power supply	110–230 V, 50–60 Hz, 1.5 kW
Compressed air supply	Min. 6 bar; 185 l/min (min 87 psi; 185 l/min)
Cooling	Air-cooled (internal cooling cycle)
Ambient temperature; humidity	22 °C ± 2 °C (71.6 °F ± 4 °F); < 60 %
Software (starting on p. 21)	LPKF CircuitPro Advanced
Options and accessories (starting on p. 25)	Dust extraction unit, compressor, starter set

^a Depending on material and laser beam parameters

^b Height with open hood: 1765 mm (69.5")



LPKF ProtoLaser R4 – Specialist for Material-friendly Processing

An important parameter for laser micro-processing is the pulse duration. The LPKF ProtoLaser R4 with picosecond-short laser pulses allows the high-precision structuring of sensitive substrates, as well as the cutting of hardened or fired substrates.

Laser Ablation with Virtually No Heat Input

The shorter the processing pulse, the lower the heat input into the adjacent material. With the picosecond laser, there is practically no heat transfer, the material vaporises directly.

Micro Material Processing at its Best

This thermal effect is important for the cutting and surface processing of temperature-sensitive materials. The laser offers very high pulse energy for cutting, for example, ceramic materials such as Al₂O₃ or GaN without discoloring them in the processing procedure. Due to the low heat input, no micro-cracks occur in the material.

The ProtoLaser R4 is also the perfect system for surface processing – such as ablating transparent thin films or removing metal layers from plastic foils. It achieves the targeted very stable laser input at low laser power. This allows standard FR4 and laminated RF materials to be processed just as well.

The high-precision hardware and integrated camera are supported by the easy-to-use LPKF CircuitPro software. This enables the user to implement projects involving demanding materials in their own laboratory within a very short time.

- Precision picosecond laser for innovative research
- Gentle processing of thermally sensitive materials
- Intuitive CAM software
- Ready-to-use laser class 1 lab system



LPKF ProtoLaser R4 (Part no.: 1009642)

Max. layout area (X/Y/Z)	229 mm x 305 mm x 7 mm (9" x 12" x 0.28")
Max. material size (X/Y/Z)	239 mm x 315 mm x 7 mm (9.4" x 12.4" x 0.28")
Laser wavelength	515 nm
Max. laser power	8 W
Laser pulse frequency	50 – 500 kHz
Diameter of focused laser beam	15 ± 2 µm (0.59 ± 0.08 mil)
Structuring speed	5.5 cm ² /min (0.9 in ² /min) ^a on laminated substrates 18 µm (0.5 oz) Cu
Laser pulse length	1.5 ps
Minimum line/space	35 µm / 20 µm (1.38 mil / 0.79 mil) ^a on FR4 18 µm (0.5 oz) Cu
Positioning accuracy in the scan field	± 5 µm (± 0.2 mil)
Repeatability in the scan field	± 0.23 µm (± 0.009 mil)
Dimensions (W x H x D)	910 mm x 1650 mm x 795 mm (35.8" x 64.9" x 31.3") ^b
Weight	390 kg (860 lbs)
Power supply	110 – 230 V, 50 – 60 Hz, 2 kW
Compressed air supply	Min. 6 bar; 185 l/min (min 87 psi; 185 l/min)
Cooling	Air-cooled (internal cooling cycle)
Ambient temperature; humidity	22 °C ± 2 °C (71.6 °F ± 4 °F); < 60 %
Software (starting on p. 21)	LPKF CircuitPro Advanced
Options and accessories (starting on p. 25)	Dust extraction unit, compressor, starter set

^a Depending on material and laser beam parameters

^b Height with open hood: 1765 mm (69.5")



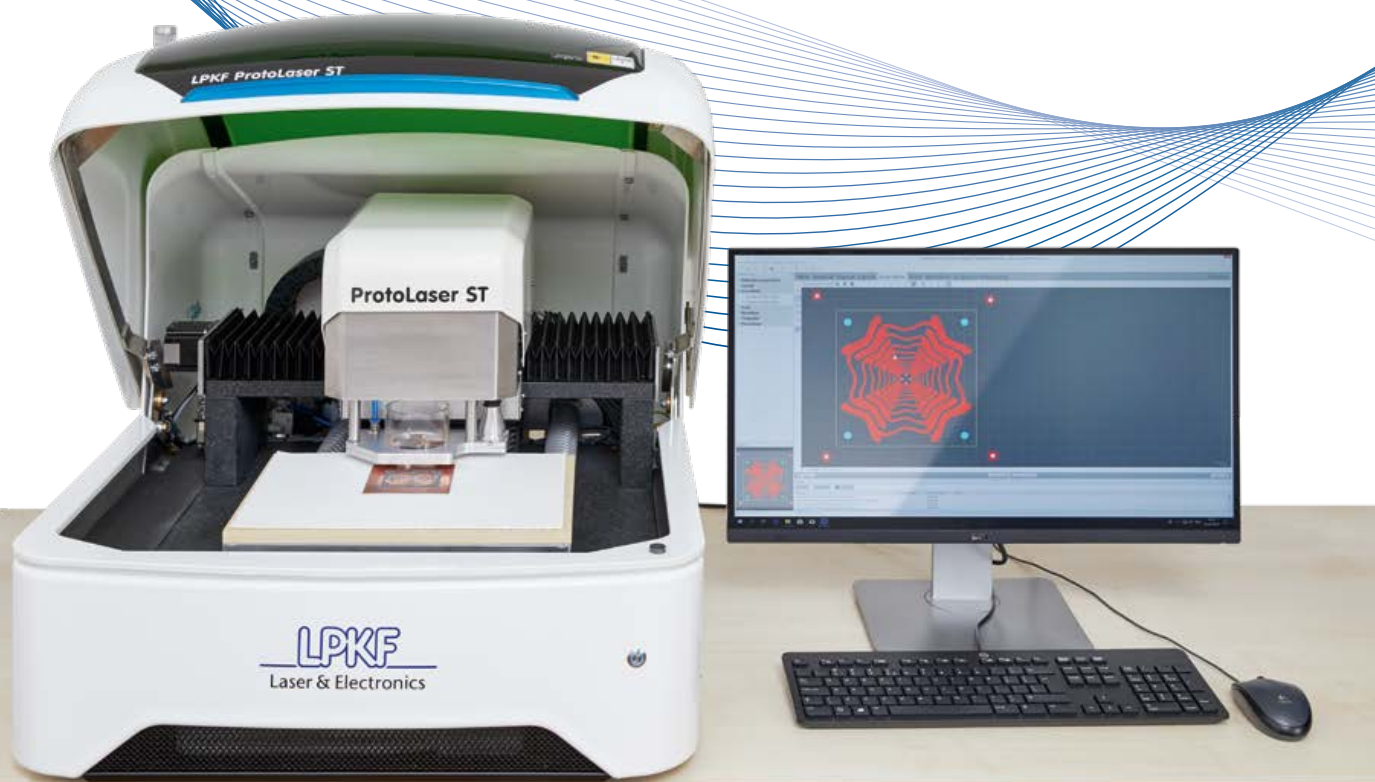
LPKF CircuitPro – Smart Software with Intuitive Operation

LPKF ProtoMat circuit board plotters and ProtoLaser systems are equipped with the powerful LPKF CircuitPro system software. The software is easy to use and intuitive and has a high degree of flexibility for optimum support even in the complex processing of innovative materials.

LPKF CircuitPro enables the easy creation of printed circuit boards in the shortest possible time. Data can be easily imported from any common design software. Application-dependent templates and predefined work sequences make using the application a breeze. The user makes the selection, the software generates the individual processing steps from it and prepares the production data.

LPKF CircuitPro then guides the user through the manufacturing process step by step.

The intuitive menu navigation makes LPKF CircuitPro very easy to understand without special training and is therefore suitable for occasional applications.



Also and Especially for Special Applications

In research and development especially, new material compositions are often used or applications that require very specific layouts. LPKF CircuitPro has extensive functions for drawing or manipulating (adjusting) the data, as well as various parameter search functions or parameter settings. The software thus enables rapid and reproducible progress with even highly innovative projects and materials.

Thanks to the adjustable user levels, research and training projects and near-series prototyping are optimally supported. LPKF CircuitPro controls the systems largely independently and informs the user by e-mail about any necessary interventions in the processing procedure – for example, the upcoming turning of the base material.

Through Experience to Simple Processes

With many years of experience in PCB prototyping and in processing new materials from the electronics sector, LPKF CircuitPro has been developed to best suit in-house prototyping.

- The automatic import of CAD data can be easily adapted to the established workflow through a one-time adaptation to existing file name suffixes.
- Sophisticated routines for milling or laser path calculation guarantee fast, optimal and reproducible results. The calculation is specifically adapted to the material chosen by the user for the project at hand.
- The extensive templates and models have also been developed based on customer feedback on specific requirements from research and industry. Example: optimized calculation routines for applications in high-frequency technology, which are specifically designed for optimum sharp edges and the homogeneous removal of material on the surface.
- Extensive draw-and-edit functions offer the possibility to create small adjustments or test layouts quickly and directly in the system without having to generate new data in CAM.

Six Steps to a Finished Printed Circuit Board



1. Create a circuit diagram in a CAD program



2. Create PCB design data in the CAD program, e. g. in Gerber or DXF format



3. The intuitive import of design data into predefined templates in LPKF CircuitPro



4. The automatic calculation of the milling or laser paths depending on the selected strategy

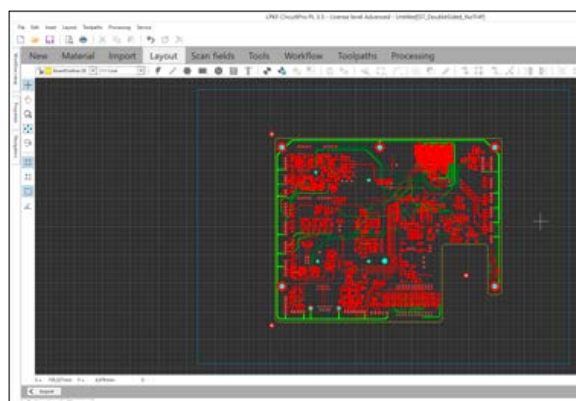


5. The template-dependent assignment of drill diameter, position and technology: simple through-holes, holes for vias, blind or buried vias for multilayer applications.



6. Calculation of the user-selected strategy for dpaneling.

A great deal of experience has also gone into the routines developed by LPKF for material processing with the laser. The wide variety of calculation models that have been developed over the years enable very fast material ablation, as well as the processing of the thinnest material layers without damaging the underlying substrates.



The Advantages of CircuitPro

- The intuitive operator guidance leads the user through the manufacturing process depending on the template selected and the material used.
- The software “thinks” along with you: If intermediate steps are required, such as through-hole plating or pressing several layers together to form a multilayer board, LPKF CircuitPro will inform the user. The software later resumes the process at the exact location and automatically starts reading the fiducials on the PCB.
- LPKF CircuitPro uses the integrated camera, which is standard equipment in all LPKF systems, to precisely read the material position and measure the milled or laser cuts created.
- The fully automatic tool change of the LPKF ProtoMat and the associated milling width adjustment are supported by LPKF CircuitPro.
- All the materials research possibilities for experienced users: The software contains numerous templates in which the process sequence or the processing of individual areas of the layout can easily be manually adjusted. For the laser tools especially, it is very easy for the user to create new tool libraries based on the generated results for a specific material.
- LPKF CircuitPro also generates templates for solder stop masks and legend printing, which can easily be applied to the PCB material with additional LPKF equipment.
- For LPKF ProtoMats equipped with a dispensing unit, CircuitPro also creates the dispensing positions and the processing sequence for applying the solder paste.

Flexible and Completely as Desired: Basic or Advanced Version

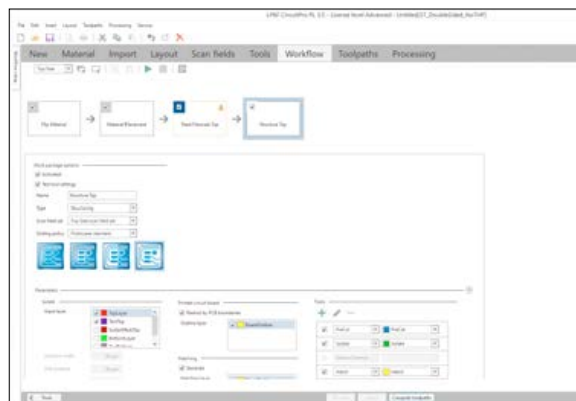
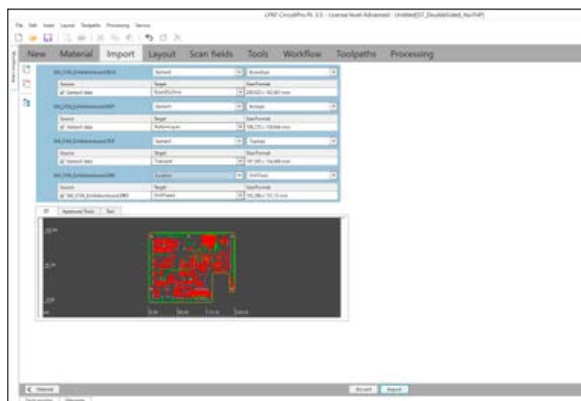
To optimally support the customer’s application, LPKF offers the LPKF CircuitPro software in Basic or Advanced versions. LPKF CircuitPro Basic is included with all LPKF ProtoMat and LPKF ProtoLaser systems and fully supports data preparation and the production of double-sided PCB prototypes.

LPKF CircuitPro Advanced accommodates a wide range of users with various extra functions:

- Additional import of the DXF format
- Advanced isolation function
- Additional templates for up to 8 layers in multilayer structures
- 2.5D function, for example to produce housing parts or front panels using LPKF ProtoMat systems with Z-axis control
- An additional calculation routine that is used especially when processing flexible materials or technical ceramics
- Extended “Step and Repeat” function for the production of small batches
- The import and editing of multiple different files in one dataset

A free four-week demo version of the LPKF CircuitPro software is available at the LPKF website at:

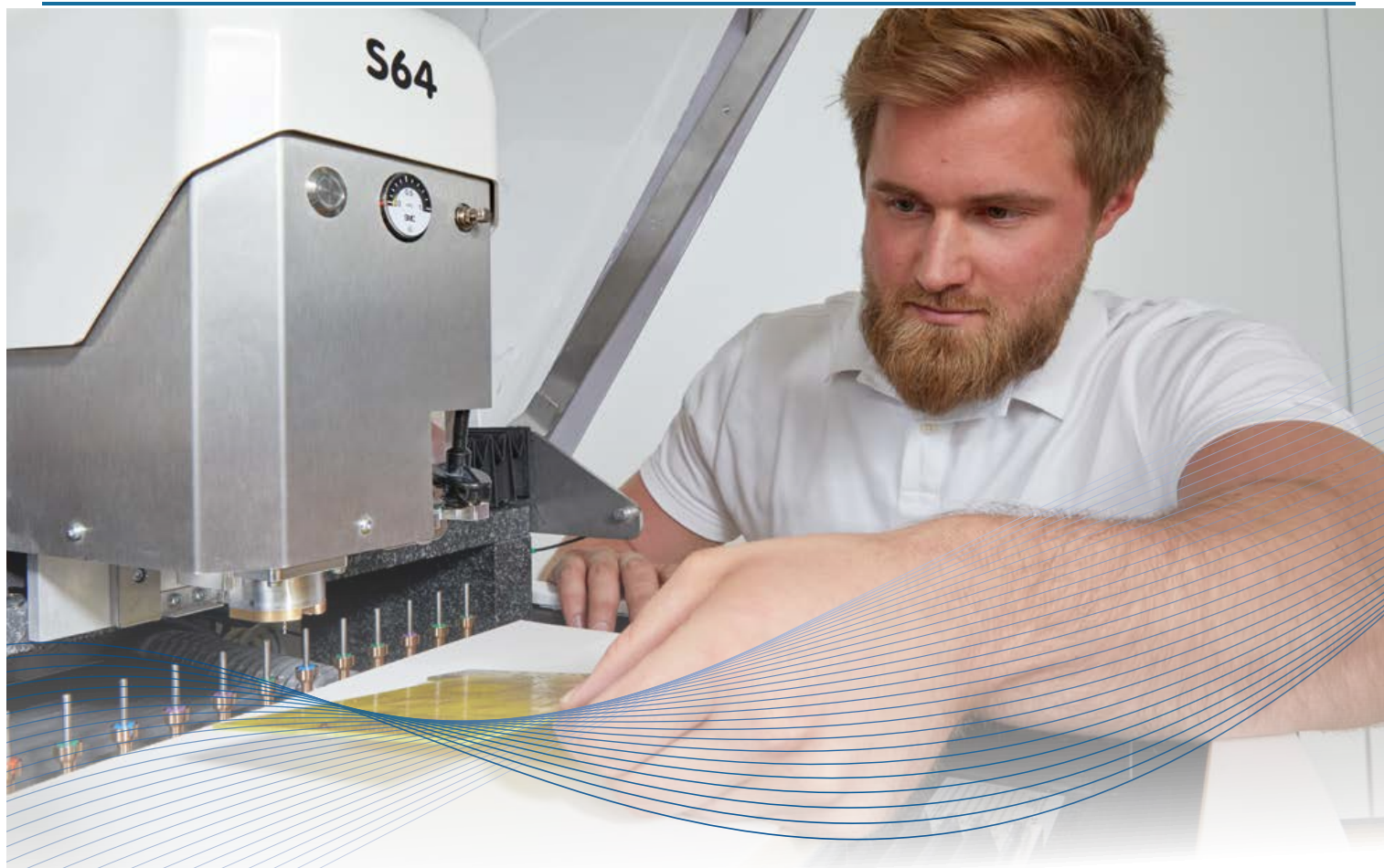
www.lpkf.com/software-download



Functions of the LPKF CircuitPro System Software

Function	Description
Import Formats	Gerber Standard (RS-274-D), Extended Gerber (RS-274-X), Gerber X2, Excellon NC Drill (Version 1 and 2), Sieb & Meier NC Drill, HP-GL™, DPF, Auto-CAD™ DXF*, IGES, LMD, STEP, CP2D
Editing Functions	Move Object, Rotate, Mirror, Scale/Expand, Difference/Merge, Split, Round/Chamfer, Fill/Contour, Path Manipulation, Modify Flash, Group Function, Convert Polygon, Convert Flash
Graphic Functions	Flash, Path, Polygon, Rectangle or Rectangle Path, Circle or Circle Path, Text, Data Matrix Code, Fiducial
Insulation Methods	Insulation with a single insulation channel, single insulation channel with double channel for pads, partial milling out of large insulation areas (rub-out) with removal of copper in defeated areas*, complete milling/laser processing out of large insulation areas (rub-out), milling with concentric-x-serpentine or y-serpentine strategy, RF insulation strategy, laser with rub-out process or hatch only strategy, additional multiple insulation of pads, removal of residual copper spikes (spike option), minimum insulation spaces
Special Functions	Routing path generator with or without breakout tabs, Free placement of taps, Insulation width adjustment, Pad insulation width adjustment, 2.5D data generation*, Z-depth penetration adjustment, optimized automatic scan field generation, manual scan field order setting, scanfield work order meander/spiral selection check copper thickness, snap and grid function, volume operations, joining/separating objects, step & repeat, ground plane, generation with defined clearance, perform inner insulation, replace existing tool path, pockets and blind via assignment
Display Functions	Separate zoom window (freely definable), zoom in/out, overview, redraw, individual layers selectable/visible, panning (keyboard), layer in solid/outline/center line display, camera view with measure function, different colors for tracks and pads of the same layer, different colors for insulation tools zoom in/out/working area/projects, previous view, all viewing methods available at all times, even during the machining process, graphical display of the current head position
Marker Functions	Single element, total layer, all layers, pad groups, selection and limiting to specific layers possible for lines/polygons/circles/rectangles/pads/holes (multiple choice and restriction to specific layers possible)
Graphic Functions	Lines (open/closed), circle, polygon, rectangle, pad, hole, text, flash, tool path, workflow, work package options
Control Functions	Measuring, design rule check, aperture list library
Control	ProtoMat circuit board plotters and ProtoLaser; Process all, stop processing, add production phase, select head/camera, laser pointer, illumination working area, vacuum remote, home position, pause position, load position, zero position, move x,y,z by free definite able steps or by cursor
Placement Functions	Copy, move, step and repeat, handles multiple artworks and placements simultaneously
Selection Methods	Total production phase, specific tools, individual drill holes/lines/segments, tool pathes, hole/line segment, dynamic highlighting
Tool Management	Milling: feed speed, rotation speed, max tool life, max penetration depth, z penetration depth, diameter Laser: frequency, power, mark speed, focus offset, repetitions, delay, compressed air support, beam diameter, laser on/off delay, jump settings, minimum angel, THP settings
Tool Library	Unlimited, individual library for different material types, individual customizable parameters
Programming Material Size	Positioning with corner coordinates, with the mouse, camera, direct coordinates
Other	Programmable mailing information about process status, production time and calculation time status bar, integration of a camera option with automatic fiducial recognition, check for broken tools
Supported Languages	English, German, French, Spanish, Italian, Chinese, Japanese, Slovenian, Polish, Russian, Swedish, Suomi, Portuguese
Basic version supplied with	ProtoMat E44, ProtoMat S64, ProtoLaser ST
Advanced version supplied with	ProtoMat S104, ProtoLaser S4, ProtoLaser U4, ProtoLaser R4
Supported LPKF systems	ProtoMat: S104, S64, S103, S63, S43, S100, S62, S42, H60, H100, E44, E34, E33 ProtoLaser: S, U, U3, S4, U4, ST, R, R4

* only LPKF CircuitPro Advanced



Accessories for LPKF Circuit Board Plotters and ProtoLasers

The performance capabilities of the LPKF circuit board plotters and ProtoLasers can be extended through the addition of accessories and options. High-grade materials and precision workmanship ensure the high reliability and longevity of all add-ons. The accessories can easily be installed in existing systems without the help of specialists.

Dust Extraction Unit

The LPKF dust extraction unit with absolute filter eliminates fibers, chips, and fine dust. The integrated AutoSwitch function switches the dust extraction unit on and off automatically.

Dust Extraction Unit	ProtoMat S + E	ProtoLaser
Part no.	10033243	124391
Vacuum pressure	Max. 22 500 Pa	Max. 21 000 Pa
Air flow rate	241 m ³ /h (142 cfm)	320 m ³ /h (188 cfm)
Power consumption	800 W (230 V) or 960 W (120 V)	1.6 kW (230 V, 50/60 Hz)
Dimensions (W x H x D)	250 mm x 300 mm x 350 mm (10" x 12" x 14")	365 mm x 1245 mm x 501 mm (14.4" x 49" x 19.7")
Acoustic pressure	50 dB(A)	Ca. 65 dB(A)
Absolute filter	HEPA filter	HEPA filter
Remote control	Software-controlled	Software-controlled



Protective Housing (for ProtoMat E44)

The protective housing for the ProtoMat E44 lowers noise emissions and keeps the work environment free of fibres and chips.

Protective Housing	ProtoMat E44
Part no.	10114097



Compressor

The LPKF compressors ensure a constant, reliable supply of compressed air to LPKF systems that use it.

Compressor	Compressor 24 l*	Compressor 60 l*
Part no.	10092064	122805
Tank size	24 l	60 l
Max. pressure	8 bar (116 psi)	10 bar (145 psi)
Output	102 l/min (3.6 cfm)	240 l/min (8.5 cfm)
Outside dimensions (W x H x D)	500 x 450 x 580 mm (19.6" x 17.7" x 22.8")	970 x 770 x 480 mm (38" x 30" x 19")
Weight	31.5 kg (69 lbs)	90 kg (198.4 lbs)
Acoustic noise	55 dB(A)	83 dB(A)
Recommended for	ProtoMat S64/S104, ProtoLaser ST, ProtoPlace S4	LPKF ProtoLaser S4/U4/R4

* incl. refrigerant-type dryer



Measuring Microscope

The LPKF measuring microscope has a magnification of 100x and a metric scale to facilitate adjustment of insulation milling widths and quality control.

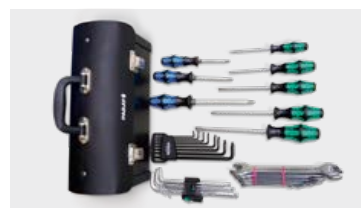
Measuring Microscope	
Part no.	10035579



Tool Set for ProtoLaser

This set of precision tools can be used to adjust the workbench and the laser.

Adjustment Tool	ProtoLaser
Part no.	118005



Accessories for LPKF ProtoMat Sx4

Tool Holder Extension Set for the LPKF ProtoMat S64

Five additional tool holders for mounting on the machinework table incl. software upgrade.

Tool Holder Extension Set for the LPKF ProtoMat S64

Part no.	SET-10-1163N
----------	--------------

Status Light for the ProtoMat Sx4

On the machine housing, it display the status: Operation, fault, user intervention required.

Status Light for the ProtoMat Sx4

Part no.	10035540
----------	----------

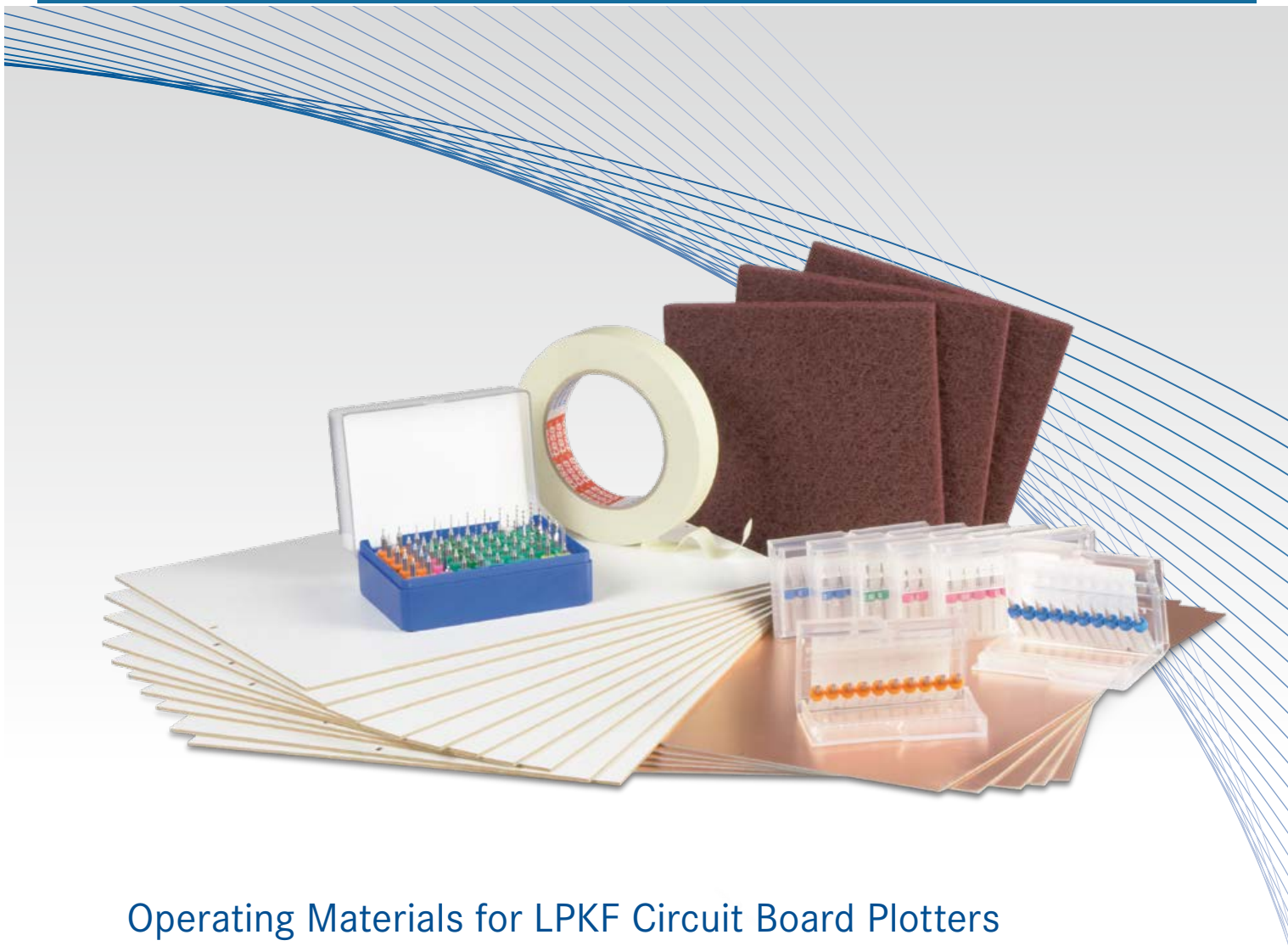


Dispenser Set for the ProtoMat Sx4

Contains a holder for the solder paste cartridge and a size 27 dispensing needle.

Dispenser Set for the ProtoMat Sx4

Part no.	10098906
----------	----------



Operating Materials for LPKF Circuit Board Plotters and LPKF Laser Systems

LPKF supplies high-quality consumables – from copper-clad base materials to cleaning pads and special adhesive tape, LPKF guarantees first-class product quality.

Copper-clad FR4 Base Materials (thickness of 1.5 mm, 10 per package)

Unless otherwise specified, the base materials are shipped with dimensions DIN A4: 210 mm x 297 mm (9" x 12"). Without 3 mm registration holes.

Part no.	Description
112060N	Base material FR4, A4, 5/5 µm, 1.5 mm thickness (NPB) with Cu protection film, set of 10
106394N	Base material FR4, A4, 18/18 µm, 1.5 mm thickness (NPB), set of 10
106396N	Base material FR4, A4, 0/35 µm, 1.5 mm thickness (NPB), set of 10
106397N	Base material FR4, A4, 35/35 µm, 1.5 mm thickness, set of 10
112059N	Base material FR4, A3, 5/5 µm, 1.5 mm thickness (NPB) with Cu protection film, set of 10
106398N	Base material FR4, A3, 18/18 µm, 1.5 mm thickness (NPB), set of 10
106400N	Base material FR4, A3, 0/35 µm, 1.5 mm thickness (NPB), set of 10
106401N	Base material FR4, A3, 35/35 µm, 1.5 mm thickness (NPB), set of 10



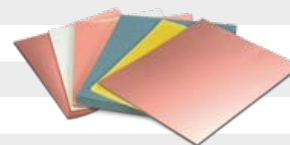
Copper-clad FR4 Base Materials (thickness of 1.5 mm, 10 per package)

Unless otherwise specified, the base materials are shipped with dimensions 229 mm x 305 mm (9" x 12").

Part no.	Description
SET-10-1053N	Base material FR4, 229 mm x 305 mm (9" x 12"), 5/5 µm with Cu protective foil, thickness 1.5 mm, pre-drilled with 3 mm fitting holes, set of 10
115968N	Base material FR4, 229 mm x 305 mm (9" x 12"), (NPB) 0/18 µm, thickness 1.5 mm, pre-drilled with 3 mm fitting holes, set of 10
SET-10-1118N	Base material FR4, 229 mm x 305 mm (9" x 12"), (NPB) 0/18 µm, thickness 1.5 mm, pre-drilled with 3 mm fitting holes, set of 10, made in China
115967N	Base material FR4, 229 mm x 305 mm (9" x 12"), (NPB) 18/18 µm, thickness 1.5 mm, pre-drilled with 3 mm fitting holes, set of 10
SET-10-1119N	Base material FR4, 229 mm x 305 mm (9" x 12"), (NPB) 18/18 µm, thickness 1.5 mm, pre-drilled with 3 mm fitting holes, set of 10, made in China
SET-10-1001N	Base material FR4, 229 mm x 305 mm (9" x 12"), (NPB) 0/35 µm, thickness 1.5 mm, pre-drilled with 3 mm fitting holes, set of 10
SET-10-1116N	Base material FR4, 229 mm x 305 mm (9" x 12"), (NPB) 0/35 µm, thickness 1.5 mm, pre-drilled with 3 mm fitting holes, set of 10, made in China
SET-10-1000N	Base material FR4, 229 mm x 305 mm (9" x 12"), (NPB) 35/35 µm, thickness 1.5 mm, pre-drilled with 3 mm fitting holes, set of 10
SET-10-1117N	Base material FR4, 229 mm x 305 mm (9" x 12"), (NPB) 35/35 µm, thickness 1.5 mm, pre-drilled with 3 mm fitting holes, set of 10, made in China

Multilayer Sets

Part no.	Description
121093	6-layer multilayer set for MultiPress S, electroplating with H and S series
121102	4-layer multilayer set for MultiPress S, ProConduct with H and S series
121103	4-layer multilayer set for MultiPress S, electroplating with H and S series
124481	8-layer multilayer set for MultiPress S, (NPB) electroplating with H and S series
10098553	4-layer multilayer set for blind/buried via (excl. ProtoMat S64/S104), size of the base material: 235 mm x 305 mm (9.25" x 12") base and auxiliary material for 10 multilayers
10098557	4-layer multilayer set for blind/buried via (excl. ProtoLaser S4/U4/R4 or combination ProtoMat & ProtoLaser), size of the base material: 235 mm x 305 mm (9.25" x 12")
10098558	6-layer multilayer set for blind/buried via (excl. ProtoLaser S4/U4/R4 or combination ProtoMat & ProtoLaser), size of the base material: 235 mm x 305 mm (9.25" x 12")
10098559	6-layer multilayer set for blind/buried via (excl. ProtoMat S64/S104), size of the base material: 235 mm x 305 mm (9.25" x 12") base and auxiliary material for 10 multilayers
10098560	8-layer multilayer set for blind/buried via (excl. ProtoLaser S4/U4/R4 or combination ProtoMat & ProtoLaser), size of the base material: 235 mm x 305 mm (9.25" x 12")
10098561	8-layer multilayer set for blind/buried via (excl. ProtoMat S64/S104), size of the base material: 235 mm x 305 mm (9.25" x 12") base and auxiliary material for 10 multilayers



Drill Underlay Sheets

Drill underlay sheets are used as backing for the base materials to prevent damage to the machine table.

Part no.	Description	Sheets per Package
SET-10-1086 N	Drill underlay sheet, DIN A4, d = 2 mm	10
SET-10-1052 N	Drill underlay sheet (pre-drilled), 229 mm x 305 mm (9" x 12"), d = 2 mm	10



Honeycomb and Sintered Plates for the Vacuum Table

Honeycomb and sintered plates reliably secure base materials to the vacuum table and can be exchanged separately.

Part no.	Description	Plates per Package
116148N	Honeycomb plates for vacuum tables, for ProConduct and ProtoMat S62/S63/S100/S103 and ProtoLaser S/U/U3/R, 5 mm thick, Ø 3.5 mm	4
116099N	Sinter plates for the LPKF vacuum table, for ProtoMat S63/S103, 5 mm thick	4
10116795	Set of underlay plates 315 mm x 239 mm x 5 mm, for the vacuum table for LPKF ProtoMat S64/S104	5
10119511	High-precision sinter plate 315 mm x 239 mm x 1.5 mm, for the LPKF vacuum table for ProtoLaser S4/U4/R4/ST	1
10033233	High-precision sinter plate 315 x 239 x 5 mm. Planparallel white for the LPKF vacuum table, for ProtoLaser S/U/U3/R	1

Starter Sets for ProtoMats and ProtoLasers

LPKF starter sets contain a comprehensive selection of working materials, tools and other accessories for rapid commissioning. Info on the precise composition is available on the LPKF website or on request.

Part no.	Description
127696	Starter set for ProtoMat E44
10082407	Starter set for ProtoMat S64
10086886	Starter set for ProtoMat S104
10086885	Starter set 2.5D for ProtoMat S series
SET-10-1128N	Starter set for ProtoLaser systems



Cleaning Pads

Part no.	Description	Pads per Package
106403	The metal-free, ultrafine board cleaning pads remove the oxidation residues from the copper layer on the base material.	10



Special Adhesive Tape

Part no.	Description
106373	The special adhesive tape holds the base material flat against the workbench and can be removed without leaving any residues.

LPKF Drilling and Milling Tools for LPKF ProtoMats

LPKF places high demands on every single tool. The drilling and milling tools developed especially for LPKF are high-quality hard metal tools. They guarantee a long service life, precise structures, and cleanly milled edges.



The tools are divided into two main categories: surface tools with a total length of 36 mm (1.42") for surface machining (cutters and end mills) and through-thickness tools with a total length of 38 mm (1.5") for penetrating the base material (spiral drills, contour routers, and end mills).

Starter Toolbox 1/8" Shaft with Distance Rings (Part no. 129103)

For all LPKF ProtoMat models. Includes tools with pressed-on distance rings: various universal cutters, microcutters, end mills, contour routers, and spiral drills in a handy toolbox.

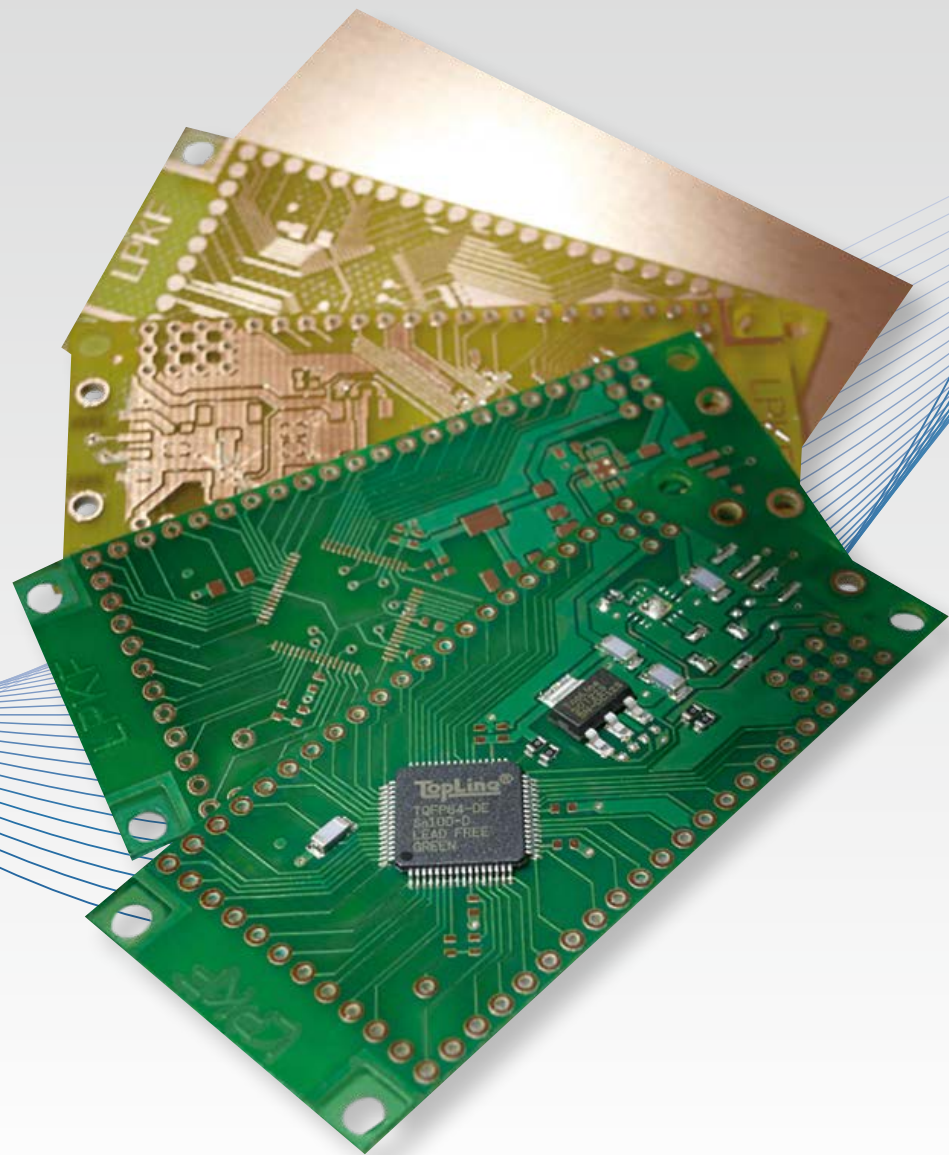
RF and Microwave Starter Toolbox with Distance Rings (Part no. 116394)

Supplements the toolkit with 20 special RF end mill tools.

Part no.	Length/Milling Width	Description
Microcutter/fine-line milling tool 1/8", conical, orange distance ring, 36 mm		
115836	0.10 – 0.15 mm (4 – 6 mil)	For fine insulation spacings with a Cu thickness of 18 µm
Universal cutter 1/8", conical, orange distance ring, 36 mm		
115835	0.2 – 0.5 mm (8 – 20 mil)	For milling of different insulation spacings in copper-coated base material
End mill (RF) 1/8", cylindrical, blue distance ring, 36 mm		
115832	d = 0.15 mm (6 mil)	For minimal insulation spacings in RF applications
115833	d = 0.25 mm (10 mil)	
115834	d = 0.40 mm (16 mil)	
End mill 1/8", cylindrical, violet distance ring, 36 mm		
115839	d = 0.80 mm (31 mil)	For wide insulation spacings and engraving of aluminum front panels and cutouts
115840	d = 1.00 mm (39 mil)	
129100*	d = 2.00 mm (79 mil)	
129101*	d = 3.00 mm (118 mil)	
End mill long 1/8", cylindrical, light green distance ring, 38 mm		
115837	d = 1.00 mm (39 mil)	For milling of Al and contour milling of soft base materials for RF and microwave applications
129102*	d = 2.00 mm (79 mil)	
Contour router 1/8", cylindrical, yellow distance ring, 38 mm		
115844	d = 1.00 mm (39 mil)	For milling of internal and external contours and drilled holes >2.4 mm (> 94 mil)
129099*	d = 2.00 mm (79 mil)	
Spiral drill 1/8", cylindrical, green distance ring, 38 mm		
115846	d = 0.20 mm (8 mil)	For drilled holes <2.4 mm (<94 mil)
115847	d = 0.30 mm (12 mil)	
115848	d = 0.40 mm (16 mil)	
115849	d = 0.50 mm (20 mil)	
115850	d = 0.60 mm (24 mil)	
115851	d = 0.70 mm (28 mil)	
115852	d = 0.80 mm (31 mil)	
115853	d = 0.85 mm (33 mil)	
115854	d = 0.90 mm (35 mil)	
115855	d = 1.00 mm (39 mil)	
115856	d = 1.10 mm (43 mil)	
115857	d = 1.20 mm (47 mil)	
115858	d = 1.30 mm (51 mil)	
115859	d = 1.40 mm (55 mil)	
115860	d = 1.50 mm (59 mil)	
115861	d = 1.60 mm (63 mil)	
115862	d = 1.70 mm (67 mil)	
115863	d = 1.80 mm (71 mil)	
115864	d = 1.90 mm (75 mil)	
115865	d = 2.00 mm (79 mil)	
115866	d = 2.10 mm (83 mil)	
115867	d = 2.20 mm (87 mil)	
115868	d = 2.30 mm (91 mil)	
115869	d = 2.40 mm (94 mil)	
115870	d = 2.95 mm (116 mil)	
115871	d = 3.00 mm (118 mil)	



* Shaft 25 mm (984 mil)



Systems and Processes for Manufacturing Component Population

After the printed circuit board has been manufactured, the prototyping process is not yet complete. Only with the following processes – through-hole plating, solder resist, solder paste printing, assembly and reflow soldering – a PCB becomes an electronic assembly.

LPKF EasyContac – Manual Through-Hole Plating of Double-Sided PCBs



- Easy and cost-effective
- Comes complete with tool
- Ideal for a small number of through holes

LPKF EasyContac is a manual system for through-hole plating of double-sided PCBs with copper alloy rivets. The set includes 1000 rivets each of outside diameter 0.8 mm (32 mil), 1.0 mm (40 mil), 1.2 mm (48 mil), and 1.4 mm (56 mil), press tools, an anvil, and tweezers.

The contact resistance is 10 mΩ; the rivet system can be used for material thicknesses of up to about 1.5 mm (59 mil).

Part no.: 110914

LPKF ProConduct – Reliable Through-Hole Plating for PCB Prototyping with Conductive Paste

Reliable through-hole plating without using a galvanic process! The paste-based through-hole plating method is also suitable for a large number of through holes with a minimum diameter of 0.4 mm (15 mil) and a maximum aspect ratio of 1:4.

The contact resistance is about 20 mΩ with a standard deviation of 8 mΩ. FR4, RF, and microwave materials (including PTFE-based materials) are suitable for contacting.

The procedure is simple:

- First a protective film is adhered to each side of the structured board
- Then a LPKF ProtoMat drills the required holes through the films and the board
- With the help of a squeegee and a vacuum – the vacuum tables on the ProtoMats are used for this purpose – the ProConduct paste is pulled through the holes on both sides
- The protective films are removed and the board is cured in the convection oven

LPKF ProConduct comes as a complete set with all tools, disposable gloves, protective films, and paste in portions with the required amounts.

- No galvanic baths
- Low-resistance, thermally stable plated through holes
- Quick and easy operation
- Also suitable for PTFE and other challenging substrates



Options and accessories (p. 43)

Vacuum table, convection oven

Part no. 115790



LPKF Contac S4 – Table-Top Through-Hole Electroplating

In galvanic through-hole plating, a very homogeneous copper layer is deposited over the entire surface of the base material and the inner walls of the through holes down to a minimum hole diameter of 0.2 mm (8 mil). The compact LPKF Contac S4 has six baths for reliably performing this task: all work steps from surface activation to the tin finish are integrated in a compact, low-maintenance unit.

The LPKF Contac S4 utilizes optimal designed anode plates and reverse pulse plating for especially uniform copper layer buildup. PCBs with through-hole plating accomplished in this way are also suitable, e. g., for structuring with the LPKF ProtoLaser S4.

The integrated computer with touch display assumes the operation and guides the user through each step of the metallization process.

The Contac S4 can also process multilayers with up to eight layers with a maximum aspect ratio of 1:10 (hole diameter to PCB thickness). A final tin bath step protects the surface and improves solderability. The long-lasting chemicals require little maintenance and have been developed and optimized specifically for the system.

- Uniform copper layer buildup
- Reverse pulse plating (RPP), black hole process, and microvia cleaning
- Chemical (electroless) tin plating
- Through-hole plating even for small diameters of >0.2 mm (>8 mil)
- No knowledge of chemistry required



LPKF Contac S4 (Part no.: 10055361)

Max. material size (X x Y)	230 mm x 330 mm (9.1" x 13")
Max. layout area (X x Y)	200 mm x 300 mm (7.9" x 11.8")
Reverse pulse plating	Adjustable
Tolerance	± 2 µm (0.08 mil), copper coating
Minimum hole diameter	≥ 0.2 mm (8 mil)
ViaCleaner	Integrated
Chemical tin plating	Integrated
Process time	Approx. 90 – 120 min
Power supply	90 – 240 V, 50 – 60 Hz, 0.6 kW
Dimensions (W x H x D)	856 mm x 446 mm x 542 mm (33.7" x 17.7" x 21.3")
Options and accessories (p. 43)	ViaCleaner chemical set, powder for electroless tin plating

Technical specifications subject to change.



LPKF MultiPress S – A Press for Multilayer Production

8-layer Multilayer in Your Own Lab

A high packing density and the correlated high number of circuits or additional tasks that need to be performed by the circuit board require the design of complex prototypes as multilayer. They can accommodate circuits in several layers.

LPKF MultiPress S is a tabletop system for pressing of multilayers in your own lab. The short process time of only approx. 90 minutes as well as user-friendly operation make the system an ideal tool for a safe production of multilayer prototypes as well as small batches.

LPKF MultiPress S presses complex circuit boards with up to eight layers in one step. Various pressure, temperature, and time profiles allow for top flexibility in the material selection and the number of layers. MultiPress S is available as the version with a manual hand pump or automatic hydraulics.

- In-house production of multilayer prototypes with rigid or flexible materials, RF materials
- Very short processing times and easy-to-use menu guidance
- Preset and individual process profiles
- Automatic hydraulics



LPKF MultiPress S (Part no.: 120734¹ / 120736²)

Max. layout size	200 mm x 275 mm (7.8" x 10.8")
Max. laminating area	229 mm x 305 mm (9" x 12")
Max. laminating pressure	286 N/cm ² at 229 x 305 mm (9" x 12")
Max. temperature	250 °C (480 °F)
Max. number of layers	8 (depending on material and layout)
Pressing time	Approx. 90 min ^a
Dimensions (W x H x D)	600 mm x 620 mm x 530 mm (23.6" x 24.4" x 20.9")
Weight	170 kg (375 lbs) ^b
Power supply	90 – 240 V, 50/60 Hz, 2.3 kW ¹ /2.8 kW ²
Microprocessor controlled	9 pressure/temperature/time profiles
Hydraulic unit dimensions (W x H x D)	260 mm x 410 mm x 280 mm (10.4" x 16.2" x 11") 100 mm x 150 mm x 700 mm (3.9" x 5.9" x 27.6") ²
Hydraulic unit weight	15 kg (33 lbs) ¹ , 5 kg (11 lbs) ²
Base materials	FR4, others on request, see page 19 for multilayer sets
Options and accessories (p. 43)	Upgrades: automatic hydraulics upgrade, rolling table

¹ With manual pump

² With automatic hydraulics

^a Depending on material compound

^b Plus weight of hand pump or automatic hydraulics



LPKF ProMask and ProLegend – Solder Masks and Legend Printing

The structured PCB prototypes receive a professional surface finish through a photosensitive process. First the entire surface of the structured board is coated with a light-sensitive paint (photoresist). A printed transparency film serves as a mask, with which the coating is then exposed in a UV exposure unit. After development, the coating regions (solder pads) to be removed are rinsed off.

LPKF ProMask is an easy-to-apply green solder mask for reliable soldering of SMD or conventional components. It prevents short circuits during soldering and protects the surface. It is ideal for SMT prototypes with closely spaced conductive traces.

LPKF ProLegend performs the professional task of legend printing and can add logos and labels to PCB prototypes.

- Compact, quick, and easy to use
- Protective surface finish and professional labeling
- Four simple steps



LPKF ProMask / LPKF ProLegend (Part no.: 117072 / 117584)

Max. material size	229 mm x 305 mm (9" x 12")
Max. layout area of image exposer	240 mm x 340 mm (9.5" x 13")
Processing time	Approx. 60 min/cycle
Pad separation	≥0.5 mm (≥20 mil) fine pitch
Adhesive strength	Class H and T, test method: IPC-SM-840 C, item 3.5.2.1
Solder bath resistance	20 s at 265 °C (509 °F), test method: IPC-SM-840 C, item 3.7.2 10 s at 288 °C (550 °F), test method: MIL-P 55 110 D 20 s at 288 °C (550 °F), test method: UL 94 (lead-free)
Surface resistance	2 x 10 exp14 Ω, test method: VDE 0303, Part 30, DIN IEC 93
Moisture resistance and isolation resistance	Class H and T, test method: IPC-SM-840 C, item 3.9.1
Solving/cleaning agent resistance	IPC-SM-840 C, item 3.9.1 (10 percent alkaline cleaner, isopropanol, monoethanolamine)
Minimum capital height	2 mm (with 1200 dpi laser printer)
Minimum capital strength	0.1 mm (with 1200 dpi laser printer)
Hardware requirements	Min. 600 dpi laser printer
Software requirements	LPKF CircuitPro
Options and accessories (p. 43)	UV exposer, convection oven

Technical specifications subject to change.



LPKF ProtoPrint S4 – SMT Stencil Printer for PCB Prototypes

Reproducible Solder Paste Printing in the Lab

For populating PCBs with SMD components, developers depend on precise application of solder paste. With stencil printing, a large number of widely varying solder deposits can be produced reliably and quickly in a single pass.

The LPKF ProtoPrint S4 offers a manual stencil printer for achieving precise printing results. The device is suitable for single-sided and double-sided printing of PCB prototypes and low volumes. The ProtoPrint S4 uses stainless steel stencils. Thanks to the integrated clamping frame the device uses stencils made of polyimide film or stainless steel. The squeegee material is defined according to the given stencil material.

LPKF stencil printers offer high positioning accuracy, SMD fine-pitch printing, adjustable print height, and quick clamping of the stencil frames. The flat base plate offers adequate space for accommodating magnetic PCB holders. Fine-positioning of the PCB is accomplished via three micrometer screws on the plate for X, Y, and theta axis control.

The LPKF CircuitPro software can be used to generate optimized data for a perforated polyimide film stencil from the PCB layout data. An LPKF ProtoMat conveniently mills out the stencil, and after a few short minutes the solder paste can be printed.

- SMD fine-pitch printing down to 0.4 mm
- Application of solder pastes and adhesives
- Printing of double-sided printed circuit boards



LPKF Edition SMT ProtoPrint S4 (Part no.: 10110445)

Max. print area	300 mm x 240 mm (11.8" x 9.4")
Max. material size	300 mm x 250 mm (11.8" x 9.8")
Max. stencil size	395 mm x 280 mm (15.5" x 11")
Min. stencil size	100 mm x 100 mm (3.9" x 3.9")
Height (Z) adjustment	0 mm – 22 mm (0" - 0.86")
Squeegee	Manually operated (metal or rubber)
Print table adjustment X/Y, theta	± 7 mm; ± 2° (± 0.27"; ± 2°)
Device accuracy	± 10 µm (± 0.4 mil)
Dimensions	540 mm x 360 mm x 170 mm (21.3" x 14.2" x 6.7")
Weight	20 kg (44 lbs)
Options and accessories	See page 44

Technical specifications subject to change.



LPKF ProtoPlace E4 – Fast and Easy Positioning

Manual Pick & Place System for PCB Prototypes

For populating PCBs with tiny SMD components, the support of a pick and place system is required. With the LPKF ProtoPlace E4 manual pick & place system, the components are safely removed from the component trays or integrated tape feeders via vacuum needle. The ergonomically formed placement head is guided to the appropriate point above the circuit board, the component is placed, and the vacuum is deactivated – all very easily with just one hand. Precise work is supported by the integrated camera, the monitor right above the work surface, and the smooth motion of the axes.

Multiple needle diameters are required to hold a wide variety of components securely. Common needle diameters are included with the system to make the ProtoPlace E4 immediately ready for use.

For components to be placed with the ProtoPlace E4, solder paste must first be deposited onto the corresponding pads on the circuit boards. This is ideally done with the dispensing function of an LPKF ProtoMat or via stencil printing with the LPKF ProtoPrint S4.

- Exact component placement by camera support
- Ergonomic one-hand operation
- Flexible work area via magnetic PCB holders
- Ready to use immediately – no additional installation required



LPKF Edition SMT ProtoPlace E4 (Part no.: 10102297)

Max. PCB size	340 mm x 170 mm (13.4" x 6.7")
Min. PCB size	8 mm x 8 mm (0.3" x 0.3")
Max. placement area	270 mm x 170 mm (10.6" x 6.7")
Max. PCB thickness	10 mm (0.4")
Height below the PCB	18 mm (0.7")
Placement head stroke	Max. 25 mm (0.98")
Min. component size	0402 – 70 x 70 mm (2.8" x 2.8")
Component trays / tape feeder	36/5
Dimensions (W x D x H)	600 mm x 600 mm (840 mm) x 200 mm (23.6" x 23.6" (33.1") x 7.9")
Weight	15 kg (33 lbs)
Ambient conditions	15 °C – 30 °C (59 °F – 86 °F) / 50 – 75 %
Compressed air	Integrated
Power supply	220 – 240 V, 5 VA; for 110 V use adapter (LPKF Order Code 10111531) needed
Options and accessories	See page 44

Technical specifications subject to change.



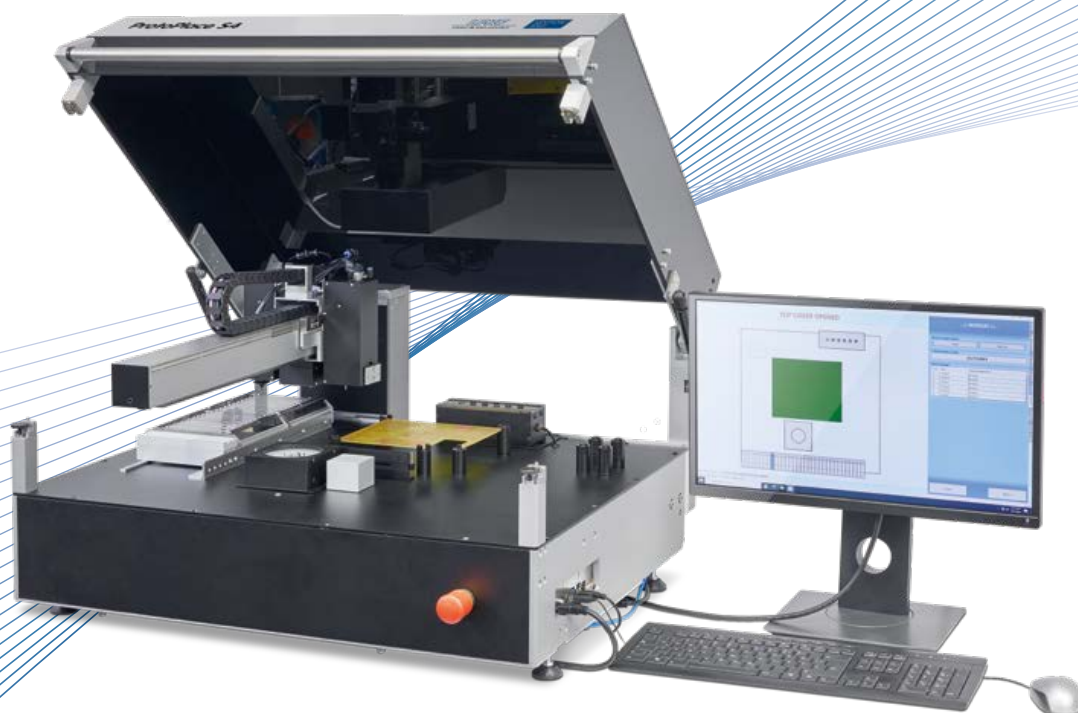
LPKF ProtoPlace S4 – SMD Pick & Place Machine for PCB Prototypes and Low Volumes

The LPKF ProtoPlace S4 features easy operation and high precision. In all the different models, use of standard and fine-pitch SMD components and placement of SOIC, PLCC, BGA, μ BGA, CSP, QFN, and LEDs are possible.

Thanks to the intuitive software interface, setup times are short – even for occasional users. The software guides the user through each step in the process. After each step, the user confirms the function and is automatically guided to the next step. This is controlled via the integrated PC, which thus assumes the tasks of data preparation and machine control. The work area for the material and the positions of individual machine components such as the bottom camera, the nozzle changer, or the component holder are shown in the graphical display.

Component holders for tapes, tubes, trays, and bulk parts can be placed on the work area which has maximum dimensions of 540 mm x 480 mm. Every pick & place system in the series has optical centering, a top camera for automatic fiducial correction, and a bottom camera for automatic component centering. The cameras can also be used for optical inspection of solder paste printing and component placement.

- Pick & place machine with camera-supported precision
- For chip designs from 0201 to 40 x 80 mm
- Automatic nozzle changer with 6 nozzles
- Intuitive graphical user interface
- CAD editor for all CAD systems



To supplement the basic LPKF ProtoPlace S4.1 machine, LPKF offers three other versions with different additional functions: A contactless dispensing head is available for application of defined amounts of solder paste or adhesives (ProtoPlace S4.10).

The “Smart Automatic Feeder” supports users with a higher throughput of PCBs, e. g., for processing low volumes (ProtoPlace S4.20). If both of these additional options are desired, then the ProtoPlace S4.30 is the system of choice.

Model	Item no.	Description
LPKF ProtoPlace S4.1	10110444	Precision SMT pick & place machine
LPKF ProtoPlace S4.10	10110498	Precision SMT pick & place machine with dispensing option
LPKF ProtoPlace S4.20	10110499	Precision SMT pick & place machine with feeder portal
LPKF ProtoPlace S4.30	10110500	Precision SMT pick & place machine with dispensing option and feeder portal

LPKF Edition SMT ProtoPlace S4

Work area	Max. placement area 480 mm x 540 mm (19" x 21")
Work area for systems with dispenser option	Max. placement area 500 mm x 480 mm (20" x 19")
Components	From 0201 to 40 x 80 mm (1.6" x 3.1")
Min. pitch	0.4 mm (15.8 mil)
X/Y resolution	0.008 mm (0.3 mil)
Z resolution	0.02 mm (0.8 mil)
Rotation	0.01°
Positioning accuracy	± 0.03 mm (1.2 mil)
Placement rate	Min. 1200 chips/h
Size	840 mm x 630 mm (700 mm with feeder option) x 430 mm (33.1" x 24.8 (27.6") x 17")
Weight	Approx. 90 kg (200 lbs)
Power supply	220 – 240 V / 50 – 60 Hz, 850 W
Air consumption	Min. 6 bar, 25 l/min (min. 90 PSI; 25 l/min)
Dispensing rate	Up to 6000 dots/h
Options and accessories	See page 45

Technical specifications subject to change.



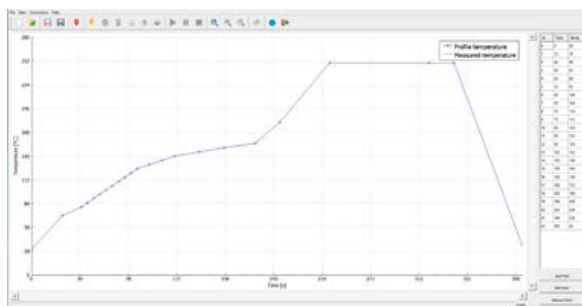
LPKF ProtoFlow S4 – Reflow Oven for Lead-Free Soldering in the Lab

Hot-Air Soldering With Profile

The LPKF ProtoFlow S4 compact hot-air oven is the ideal device for RoHS-compliant lead-free reflow soldering. Visual monitoring of the process is made possible by the large inspection window in the thermally decoupled door. The optimal process parameters for the respective solder can be saved in the integrated software. Apart from predefined process profiles, any custom temperature profiles and process times can be set in the software. They can be saved as custom profiles.

Active cooling at the end of the soldering process with the chamber closed prevents uncontrolled temperature fluctuations in the material. Via an outlet opening, any fumes or gases generated in the process can be safely discharged to an external system.

Four thermocouples ensure perfect heat distribution in the process chamber and regulate the infrared heating elements on the upper and lower sides of the chamber separately. With the help of a freely positionable additional temperature sensor, critical regions right on the PCB can be separately monitored. The low-vibration PCB mount in the process chamber supports processing of double-sided PCB assemblies.



- RoHS-compliant lead-free reflow soldering
- Easy application through integrated user software
- LAN interface for remote operation
- Large inspection window for monitoring the melting process
- Active cooling of process chamber
- Optional additional temperature sensor



LPKF Edition SMT ProtoFlow S4 (Part no.: 10110446)

Max. PCB size	320 mm x 280 mm (12.6" x 11")
Max. heating area	305 mm x 230 mm (12" x 9")
Max. reflow temperature	290 °C (554 °F)
Outlet tube for active cooling	Diameter: 80 mm (3.15")
Time for temperature stabilization	<5 min
Ambient temperature	0 – 40 °C (32 – 104 °F)
Power supply	208 V – 230 V, 50/60 Hz, single-phase 3.5 kW
Dimensions (W x D x H)	540 mm x 480 mm x 300 mm (21.3" x 18.9" x 11.8")
Weight	38 kg (83.8 lbs)
Required software	Windows 10

Technical specifications subject to change.



Accessories for SMT Systems and Processes

Accessories for Through-Hole Plating with LPKF ProConduct

Convection Oven (Part no. 115877)

The convection oven is used for curing the ProConduct paste, predries the board for the solder mask, and cures the solder mask or label in approximately 30 minutes. With timer and precise temperature control.



Vacuum Table (Part no. 115878)

Vacuum table developed especially for the ProConduct system for suctioning off excess paste prior to curing.



Dust Extraction Unit (Part no. 10033243)

The dust extraction unit maintains a constant vacuum level across the entire vacuum table.

Accessories for Pressing of Multilayers with the LPKF MultiPress S

Rolling Table (Part no. 107050)

A mobile table on sturdy rollers especially for the MultiPress S.

Automatic Hydraulics Upgrade (Part no. 120744)

The automatic hydraulic unit is an extension of the LPKF MultiPress S.

Accessories for LPKF ProMask and LPKF ProLegend

LPKF LED UV Exposure for ProMask and ProLegend (Part no. 10102193)

Transfers the film template to a photosensitive layer in approximately 30 seconds. 110 – 240 V, 50/60 Hz.



LPKF ProMask Consumable Set (Part no. 117108)

Contains ProMask solder resist, developer, conditioner, and laser printer film.

LPKF ProLegend Consumable Set (Part no. 117564)

Contains ProLegend labeling paint, developer, conditioner, and laser printer film.



Convection Oven (Part no. 115877), see above.

Accessories for LPKF Contac S4

Chemical Set (Part no. SET-10-1124N) for Galvanic Through-Hole Plating Comprising:

LPKF ViaCleaner chemical set (Part no. SET-10-1123N), 5 l cleaner 110, 5 l cleaner 210, 5 l activator 310, 15 l copper plater 400, and 0.5 l shine 400.

Powder for Electroless Tin Plating (Part no. SET-10-1090N)

For mixing of 10 l of tin plating solution for a sealed, solderable surface finish.

Accessories for LPKF ProtoPrint S4

Squeegee

Various squeegees for applying solder paste

Universal squeegee holder for metal or rubber 160 mm	Part no. 10110447
Universal squeegee holder for metal or rubber 200 mm	Part no. 10110448
Universal squeegee holder for metal or rubber 250 mm	Part no. 10110449
Metal blade 160 mm	Part no. 10110450
Metal blade 200 mm	Part no. 10110451
Metal blade 250 mm	Part no. 10110452
Rubber wiper 160 mm	Part no. 10110453
Rubber wiper 200 mm	Part no. 10110454
Rubber wiper 250 mm	Part no. 10110455

Polyimide Film

Pack of 10. Polyimide film 125 µm, A4 for stencil milling

Part no. 108321

Magnetic PCB Holder

Kit for the DS printing magnetic holder, 1 set = 2 pieces, 150 mm	Part no. 10110456
Kit for the DS printing magnetic holder, 1 set = 2 pieces, 250 mm	Part no. 10110457
Kit for the DS printing magnetic holder, 1 set = 2 pieces, 375 mm	Part no. 10110458
Kit for the DS printing magnet pin, H = 20 mm, Ø = 4 mm, flattened	Part no. 10110459



Accessories for LPKF ProtoPlace E4

Needle set

Part no. 128410

10 x d = 1.79 mm (0.07")
10 x d = 1.37 mm (0.054")
10 x d = 0.84 mm (0.033")
10 x d = 0.58 mm (0.023")
10 x d = 0.43 mm (0.017")

Vacuum Cap

Vacuum Cap, d = 3.17 mm (0.125"), 10 pieces	Part no. 128416
Vacuum Cap, d = 9.6 mm (0.378"), 10 pieces	Part no. 128417

Adapter

Adapter 50 W AC Power 110 V to 220 V voltage converter	Part no. 10111531
--	-------------------

Accessories for LPKF ProtoPlace S4

Magnetic Circuit Board Holder

Magnetic bowl holder, 6 magnetic holders (for 2 bowls)	Part no. 10110413
Magnetic printed circuit board holder	Part no. 10110414
Magnetic printed circuit board support pin	Part no. 10110415

Manual Feeders

Manual strip feeder block, 10 tapes x 8 mm wide, length = 100 mm	Part no. 10110416
Manual strip feeder block, magnetic, 1 tape x 8 mm wide, length = 300 mm	Part no. 10110417
Manual strip feeder block, 5 tapes x 12 mm wide, length = 100 mm	Part no. 10110418
Manual strip feeder block, magnetic, 1 tape x 12 mm wide, length = 300 mm	Part no. 10110419
Manual strip feeder block, 5 tapes x 16 mm wide, length = 100 mm	Part no. 10110420
Manual strip feeder block, magnetic, 1 tape x 16 mm wide, length = 300 mm	Part no. 10110421
Manual strip feeder block, magnetic, 1 tape x 24 mm wide, length = 300 mm	Part no. 10110422
Manual strip feeder block, magnetic, 1 tape x 32 mm wide, length = 300 mm	Part no. 10110423
Manual strip feeder block, magnetic, 1 tape x 44 mm wide, length = 300 mm	Part no. 10110424
Manual strip feeder block, 4 x 8 + 2 x 12 + 2 x 6 mm, length = 100 mm	Part no. 10110425
Manual stick feeder, up to 8 mm wide, length = 100 mm	Part no. 10110426
Manual stick feeder, up to 8 mm + 12 mm + 16 mm wide, length = 100 mm	Part no. 10110427
Manual stick feeder, 3 x up to 8 mm wide, length = 100 mm	Part no. 10110428
Manual stick feeder, up to 12 mm wide, length = 100 mm	Part no. 10110429
Manual stick feeder, 3 x up to 12 mm wide, length = 100 mm	Part no. 10110430
Manual stick feeder, up to 16 mm wide, length = 100 mm	Part no. 10110431
Manual stick feeder, 3 x up to 16 mm wide, length = 100 mm	Part no. 10110432

Automatic Feeders

Automatic band feeder, 8 mm wide	Part no. 10110437
Automatic band feeder, 12 mm wide	Part no. 10110438
Automatic band feeder, 16 mm wide	Part no. 10110439
Automatic band feeder, 24 mm wide	Part no. 10110440
Automatic band feeder, 32 mm wide	Part no. 10110441
Automatic band feeder, 44 mm wide	Part no. 10110442
Automatic band feeder, 72 mm wide	Part no. 10110443
Automatic stick feeder, up to 8 mm wide	Part no. 10110433
Automatic stick feeder, up to 12 mm wide	Part no. 10110434
Automatic stick feeder, up to 16 mm wide	Part no. 10110435
Automatic stick feeder, up to 24 mm wide	Part no. 10110436

Magazine for Coils

Magazine for approx. 40 coils, $\varnothing = 175$	Part no. 10111514
Magazine for approx. 20 coils, $\varnothing = 175$	Part no. 10111515
Magazine for approx. 40 coils, $\varnothing = 175$ and $\varnothing = 330$	Part no. 10111516
Separator plate for coils, $\varnothing = 175$	Part no. 10111517
Separator plate for coils, $\varnothing = 330$	Part no. 10111518

Dispensing Needle Heating Element

Controllable needle heating for the dosing head	Part no. 10112971
---	-------------------

Stands (Tables)

Stands for P1, P10, P20, P30	Part no. 10111521
Stands with a monitor and keyboard holder for P1, P10, P20, P30	Part no. 10111522



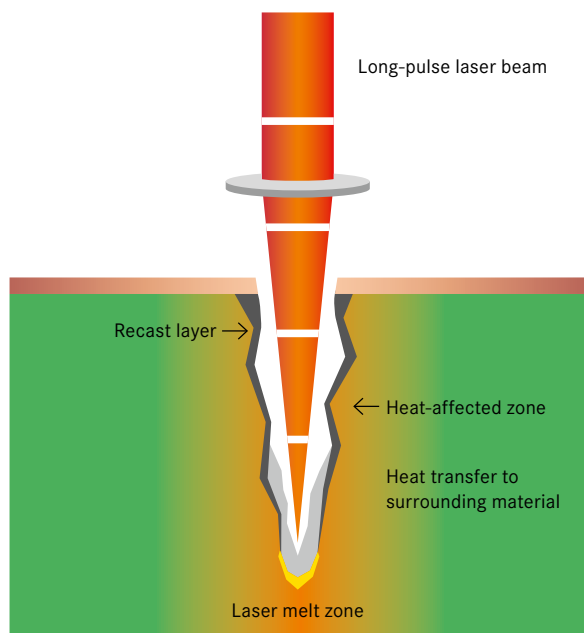
Scientific Prototyping – Laser Systems for Development and Science

New, innovative materials are continuously being discovered, developed and researched in all industries. The goals have different motivations: Either new applications are to be driven forward or existing applications are to be optimized, reduced in price or made even smaller. Just as with existing specialized materials, laser technology plays a decisive role in the processing of these new materials.

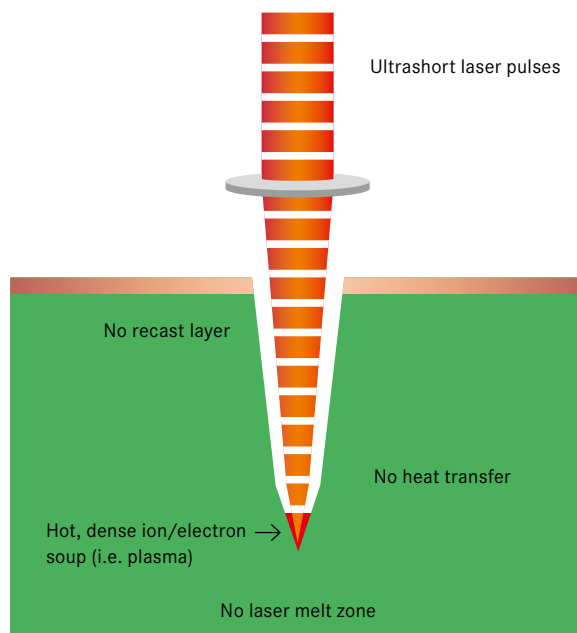
A closer look at laser light as a tool shows:
The wavelength, pulse duration and pulse frequency are decisive parameters in material processing. The choice of the optimal laser system is therefore ideally made according to the respective material properties. LPKF supports materials research with laser systems for virtually every application.

The LPKF ProtoLaser has been setting standards for several years in the innovative processing of typical materials from the world of electronics, e.g. rigid and flexible copper-clad substrates or hardened ceramics. With the LPKF ProtoLaser U4, a wide variety of materials can be processed with high precision using laser processing with wavelengths in the UV range. LPKF's CircuitPro software is specifically designed to meet the needs of laser prototyping, enabling the rapid optimization of layout data and the easy operation of the laser tool.

Research interest is increasing in the processing of thermally sensitive materials with ever-smaller dimensions. Laser pulses in the picosecond range – as offered by the ProtoLaser R4 – are the optimal tool for gently processing these materials. The low heat input enables high quality application. Even cuts only a few μm wide can be realized by the ProtoLaser R4 with very good edge sharpness and almost without affecting the substrate material. This laser system is also excellently supported by the LPKF CircuitPro software. It inspires with some features that specifically drive research on newly developed, innovative materials.



Nano-second laser



Pico-second laser

Laboratory Laser Systems for Demanding Applications



LPKF ProtoLaser U4

The ProtoLaser U4 is a laser system that covers a wide range of processing thanks to the UV laser source. The system can structure and cut printed circuit boards quickly and flexibly.

RF materials are produced with precise geometries, high edge steep sidewalls and minimal substrate damages.

It is possible to cut and structure ceramics and LTCC, as well as remove thin layers – such as invisible TCO layers on transparent substrates. Due to the stable laser power over the complete power range and the power measurement on substrate level, the processing procedure is reproducibly monitored at any time. This qualifies the ProtoLaser U4 for processing demanding material in development laboratories, as well as for the production of small batches.

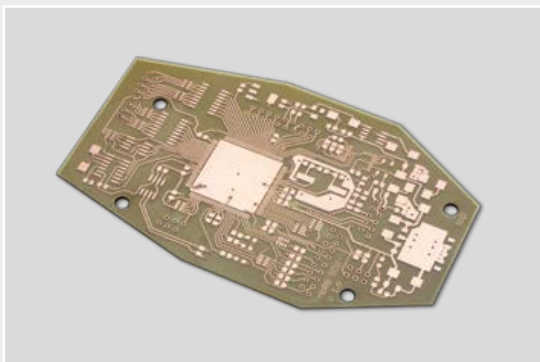
LPKF ProtoLaser R4

The ProtoLaser R4 is equipped with laser technology that implies the minimum temperature input into the material to be processed due to the very short pulses.

This technology offers unprecedented opportunities for materials research. Thin substrates are protected during surface processing thanks to the extremely low heat input. Transparent materials such as glass are not transparent to ultrashort pulses and can thus be processed well. Very hard and brittle materials that could be affected by higher heat input remain free of microcracks when processed using the ultrashort pulse laser.

The ProtoLaser R4 also impresses with its sophisticated system software with intuitive data processing that enables precise parameter searches, among other things, for innovative research projects.

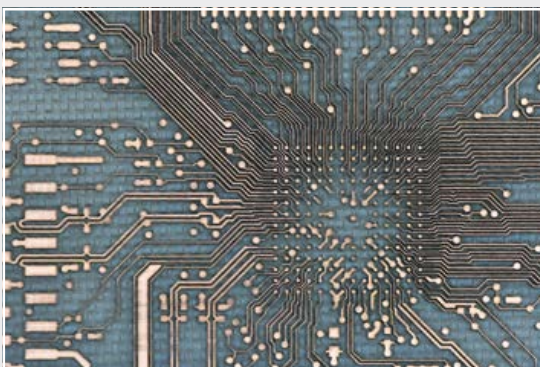
Application examples – ProtoLaser U4 and ProtoLaser R4



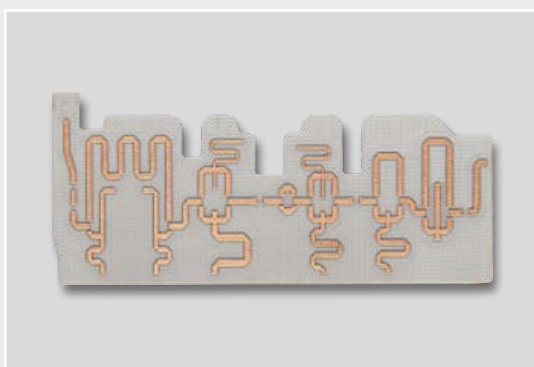
The flexible processing of single and double-sided FR4 PCBs with up to 35 μm CU



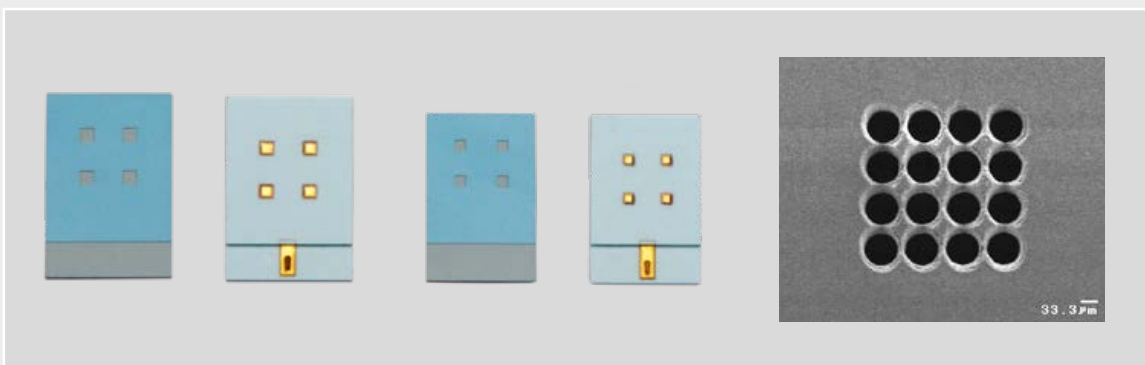
The cutting and structuring of single- and double-sided laminated flexible electronic materials (DuPont Pyralux)



High-resolution structures on PTFE-filled laminated materials (RO3000)



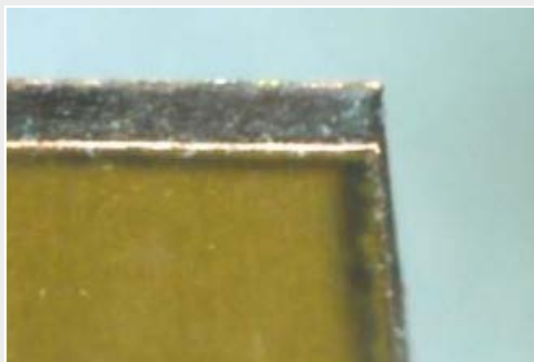
RF application with precise geometries on RF-specific materials with ceramic filling (RO4000)



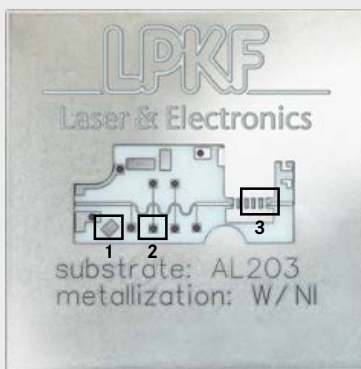
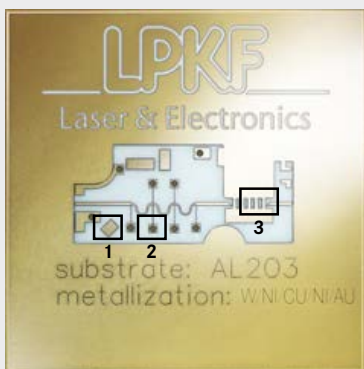
The UV laser cuts, engraves and drills mechanically sensitive substrates, such as LTCC components.



Processing of transparent layers such as ITO or TCO on transparent substrates, e. g. glass

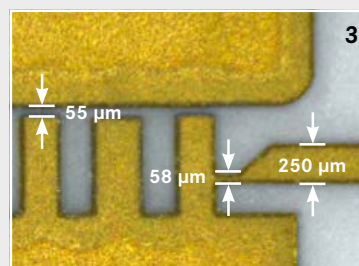
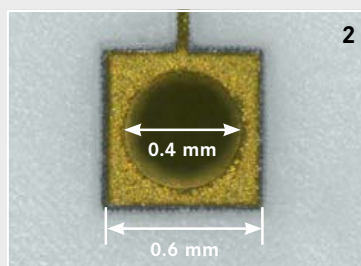
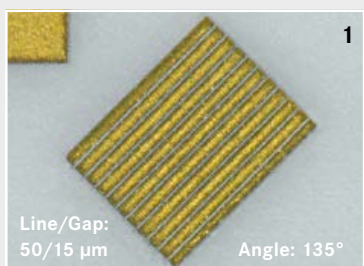


A clean laser cut edge in RO5000



Ceramics and Metal Layer Processing

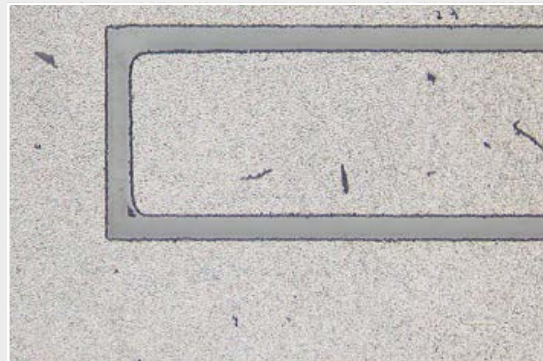
Metal layers on ceramics (Al_2O_3): The LPKF ProtoLaser U4 and R4 can score, precisely structure, engrave, and even drill ceramics.



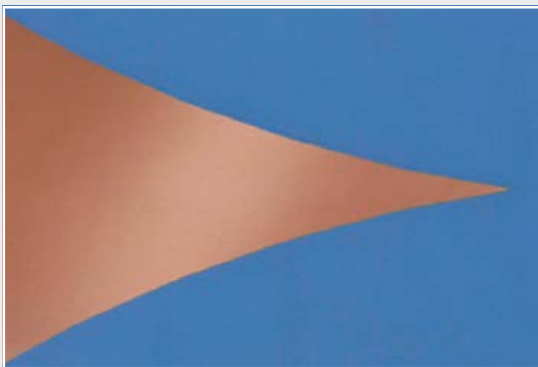
Application examples – only for ProtoLaser R4



Cutting GaN and the geometrically accurate ablation of μm thick copper/gold coatings



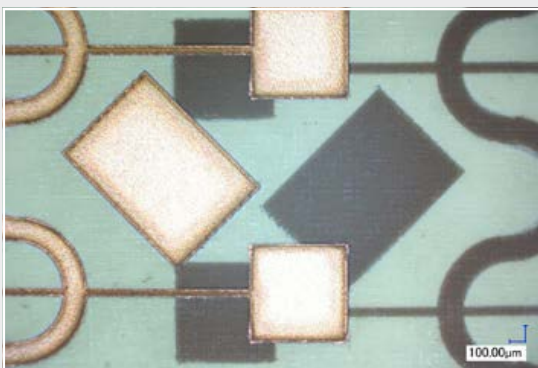
The ablation of μm -thick graphene layers from thermally sensitive and flexible substrates



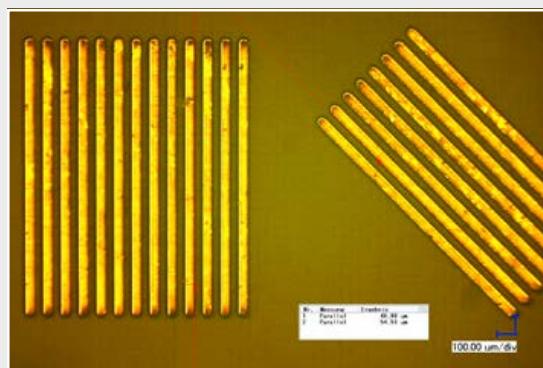
The removal of μm -thick copper coatings from glass surfaces



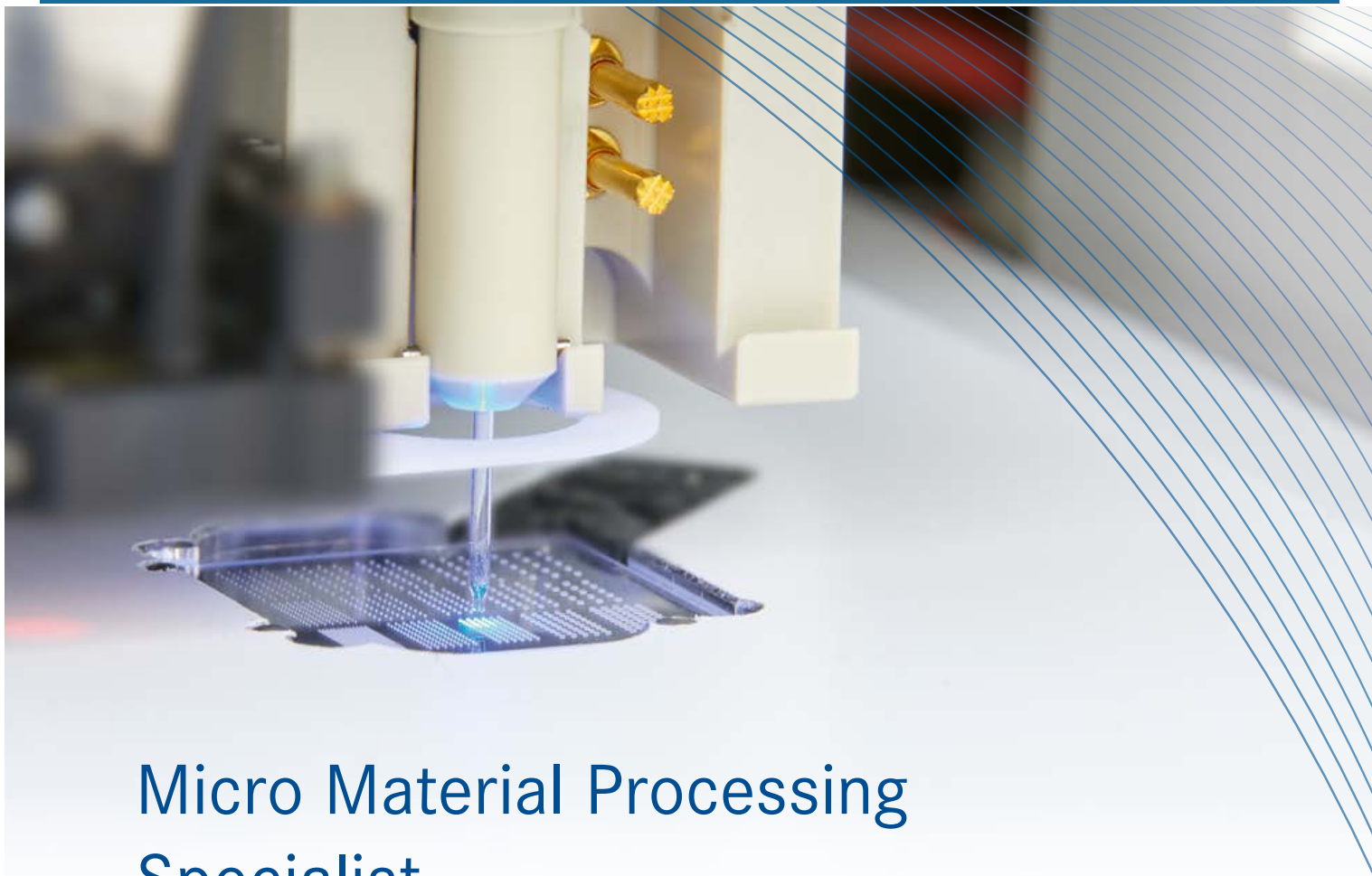
Cutting through thin glass



Full polyimide-clad laminate, 25 μm dielectric thickness with double-sided 9 μm copper coating



Pt structures smaller than 50 μm on biocompatible materials such as LCP and COC



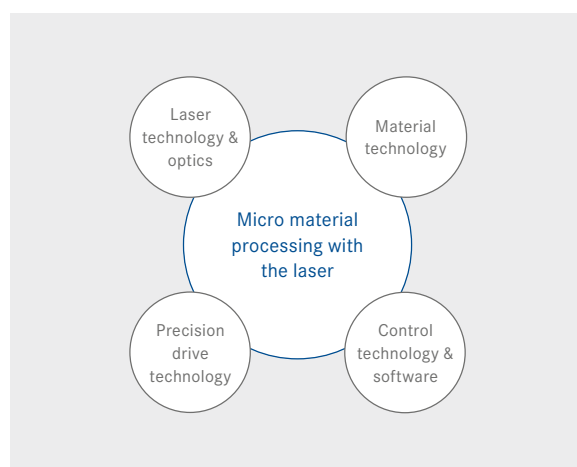
Micro Material Processing Specialist

With systems for the simple production of even very complex PCB prototypes, LPKF has made a good name for itself. As a technological company and a leading provider of laser material processing solutions, LPKF has much more to offer. Our sophisticated machines help create more powerful electronic systems and increase the functionality and efficiency of a wide range of applications and industries – even outside of electronics.

Successful micro material processing requires several core competencies – and LPKF has built them up over many years. For example, specialized laser sources are developed and manufactured in-house, because laser micro material processing has different requirements to welding thick stainless-steel sheets.

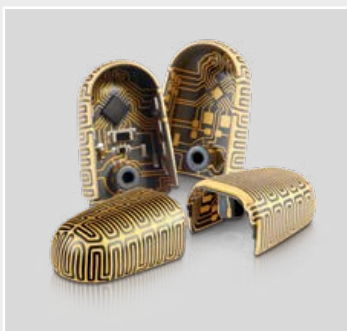
Users can process a wide range of materials with LPKF technology: from plastics to ceramics to stainless steel. LPKF has also developed a special technology for the micro material processing of thin glass.

Components manufactured using LPKF systems and processes can be found in many areas: electronics, medical technology, automotive engineering and sophisticated consumer products.



Microfine Applications of LPKF Technologies

LPKF engineers have developed an interesting technology portfolio over the years and turned it into highly functional machines – in part building on the expertise that the company has acquired in PCB prototyping. This makes LPKF a global leader. Many industries benefit from applications that could only be realized thanks to LPKF technologies. Read for yourself what is possible, among other things, thanks to LPKF.

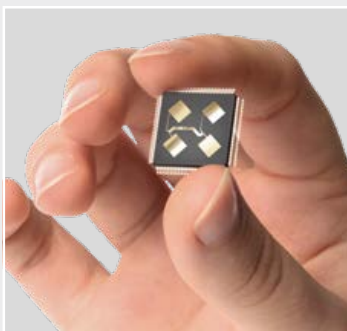


Creating Conducting Paths Directly on Injection Molded Components

The technology of integrating mechanical and electronic functions in a single component is used in many everyday applications: in sensors, as antennas in cell phones, and in medical, air-conditioning and security systems. Made possible by LPKF Laser Direct Structuring (LDS).



www.lpkf.com/lps-technology



Functionalising Epoxy Mold Compounds and Miniaturising ICs

The new construction and connection technology for the production of integrated circuits (ICs) is a simple, time-saving and reliable 2.5D packaging approach for even more compact IC packages and state-of-the-art electronics. Made possible by LPKF Active Mold Packaging (AMP).



www.lpkf.com/amp-technology

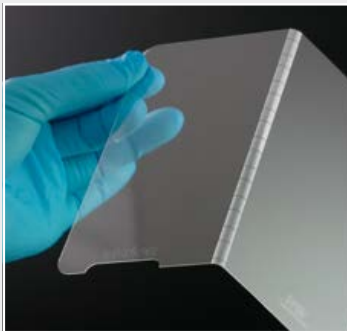


Implementing Digital Printing on Glass of Any Kind with Ceramic Pigments

This laser-based process realizes the printing of any motifs on virtually any glass shape, using inks with pigments the size of screen-printing particles. For automotive glass, but also for other applications. This innovative process is called LPKF Laser Transfer Printing (LTP).



www.lpkf.com/ltp-technology

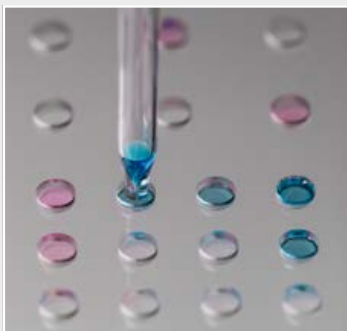


Enabling the Error-Free Micro Material Processing of Thin Glass

Thin glass can be used in many areas: in microfluidics, in heterogeneous integration or in the manufacture of glass displays. The innovative LPKF technology has broken through the hurdles of the difficult processing of the material and thus the previous use restrictions: Laser-Induced Deep Etching (LIDE).



www.vitron.com

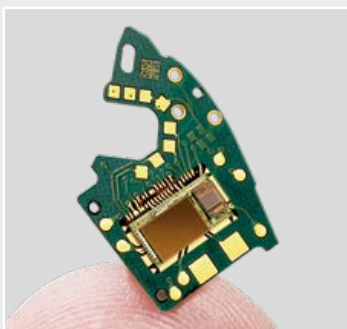


Performing Cellomics Experiments Precisely and Quickly

In the bio-sciences, high-throughput experiments with high precision can be performed very economically thanks to LPKF glass arrays and special machines. For medical technology research and diagnosis, as well as for laboratory tests. With ARRALYZE from LPKF.



www.arralyze.com



Optimizing Industrial Electronics Manufacturing

Laser technology from LPKF handles the precise and fast cutting of stencils, as well as the drilling, structuring and cutting of a wide variety of PCB materials and populated assemblies, as well as sensitive foils. The machines for this are the LPKF CuttingMaster, MicroLine, PicoLine, StencilLaser, MicroCut and PowerCut.



www.lpkf.com/electronics-manufacturing



Joining Plastic Components Precisely, Reliably and Permanently

Laser welding joins plastics without chemical, thermal or mechanical influences on the surrounding material or construction elements. Sensors, fittings, cartridges, housings and valves – numerous applications are implemented using the laser. For automotive and medical technology, for electronics and the consumer sector. LPKF LaserWelding.



www.lpkf.com/laser-plastic-welding



Scribing Thin-Film Solar Modules

When it comes to manufacturing high-performance thin-film solar modules, detail is crucial. To dissipate electrical power across the extremely thin layers, serial interconnection is necessary. LPKF laser scribers break down (unrivaled) the active layers on the large solar modules precisely and quickly into fine cells. Photovoltaic equipment from LPKF.



www.lpkf.com/photovoltaics



LPKF Service & Support – Secure Your Investment

Your prototype and development work is also important to us. Therefore, we not only offer the latest technology in our portfolio, but also a selection of high-quality service solutions and services. We combine the advantages of Internet technologies with personal contact and combine expertise and experience with a worldwide sales and service network – whether for the regular inspection of the systems used or for the supply of spare parts, whether for training or for a service contract.





Anytime – Even If It Is More Difficult Sometimes

If an on-site service visit is impossible, we use an efficient tool that can still provide optimal support: The easy-to-use TeamViewer Pilot app is based on augmented reality and allows us to perform remote maintenance and diagnostics via video and voice connection. Online training and installations are also possible.

Service Contracts

Our Basic, Classic and Premium service packages include different levels of service, support and training as required. They guarantee fast response times, whether in person on-site or via free remote support and qualified email and phone support.



Commissioning, Training and Upgrades

Well trained, you can exploit the potential of the systems. The wide range of training courses is aimed at both beginners and experts. LPKF supports you with coordinated solutions and service packages. Upgrades help flexibly adapt your products to changes and thus to always use the systems optimally.

Original Spare Parts

Your investment should pay off: With original LPKF spare parts matched to your product, they work safely, precisely and reliably over the long term.

Maintenance and Warranty Extension – Up to 5 Years

To maintain the longevity, accuracy and safety of your systems, LPKF offers preventive maintenance. This protects your investment and is easy to schedule thanks to proven service offerings. In some cases, we can extend the warranty period up to 5 years.

You can discuss with LPKF’s service staff or the authorized LPKF representative in your area which service & support package suits you best.



LPKF International Contacts

Australia

Embedded Logic Solutions Pty. Ltd.
Phone +61-2-96871880
Fax +61-2-96871881
sales@emlogic.com.au
www.emlogic.com.au

Austria

elsinger electronic handel gmbh
Phone +43-1-9794651-0
Fax +43-1-9794651-24
office@elsinger.at
www.elsinger.at

Argentina

EDASIM Argentina
Phone +54 11 5168 5834
edasim@edasim.com
https://edasim.com/en

Brazil

ANACOM Eletronica Ltda.
Phone +55-11-3422-4200
Fax +55-11-3422-4242
contato@anacom.com.br
www.anacom.com.br

China

LPKF (Tianjin) Co., Ltd.
Phone +86-22-2378-5318
sales.china@lpkf.com
www.lpkf.cn

Chile

EDASIM Chile
Phone +56 2 2728 3989
edasim@edasim.com
https://edasim.com/en

Colombia

EDASIM COLOMBIA LTDA
Phone +57 1 905 4670
edasim@edasim.com
https://edasim.com/en

Czech Republic

SE Spezial-Electronic AG, o.s.
Phone +420-233-326621
Fax +420-233-326623
spezial@spezial.cz
www.spezial.cz

Egypt

Universal Advanced Systems (UAS)
Phone +20-2-24030660
Fax +20-2-24027629
mahmoud.aladdin@uas-eg.com
www.uas.com.eg

Estonia, Lithuania, Latvia

Eiskopf OÜ
Phone +372 5624 7146
Fax +372 678 8083
sales@eiskopf.eu
www.eiskopf.eu

Finland

IsoProto Oy
Phone +358 50 381 3344
janne.isopahkala@isoproto.fi
www.isoproto.fi

France

Inoveos S.A.R.L.
Phone +33-587498020
Fax +33-587498021
oseguin@inoveos.com
www.inoveos.com

Great Britain

TRACKS Laser & Electronics Ltd.
Phone +44-844-8157266
Fax +44-844-5763855
sales@trackslaser.co.uk
www.trackslaser.co.uk

Greece

S.K.T. Testing Co.
Phone +30-210-6618414
Fax +30-210-6618421
ktheodoridis@skt-testing.gr
www.skt-testing.gr

Hungary

Microsolder Kft.
Phone +36-1-203 8742
Fax +36-1-206 1012
info@microsolder.hu
www.microsolder.hu

India

Bergen Associates Pvt. Ltd.
Phone +91-11-2592-0283
Fax +91-11-2592-0289; -0292
info@bergengroupindia.com
www.bergengroupindia.com

Israel

MTI Engineering Ltd.
Phone +972-3-9008900
Fax +972-3-9008902
yakid@mtisummit.co.il
www.mtisummit.co.il

Italy

NITZ engineering GmbH
Phone +39-0472-833944
Fax +39-0472-833943
info@nitz.it
www.nitz.it

Japan

LPKF Laser & Electronics K.K.
Phone +81 47 432-5100
Fax +81 47 432-5104
info.japan@lpkf.com
www.lpkf.jp

Jordan

International Engineers for Trading
Phone +962-6-551-4648
Fax +962-6-551-9211
ie-est@nol.com.jo
www.ie-est.com.jo

Pakistan

Zeeshan Electronics
Phone +92-51-4449945
Fax +92-51-4449948
zia.sheikh@zeeshanelectronics.com

Peru

MBC Soluciones S.A.C.
Phone +51-1-296-8889
mburgos@mbc.pe
www.mbc.pe

Poland

SE Spezial-Electronic Sp.z.o.o.
Phone +48-228409110
Fax +48-228412010
marek@spezial.pl
www.spezial.pl

Qatar

acon calibration and instruments trading
- ACIT
Phone +974 4436 3494
Fax +974 4486 8827
info@acitqatar.com
www.acitqatar.com

Romania

Interbusiness Promotion & Consulting S.R.L.
Phone +40 31 4178390
Fax +40 31 4178390
marian.lazurca@interbusiness.ro



Russia

All Impex 2001
Phone +7-495-9213012
Fax +7-495-646-20-92
info@all-impex.ru
www.all-impex.ru

Spezial Electronic & Technology (SE&T)

Phone +7 812 438 10 29
Fax +7 812 438 10 29
info@lpkfpro.ru
www.lpkfpro.ru

Saudi Arabia

ARAB ENGINEERS for
Trading Co., Ltd.
Phone +966-1-4633117
Fax +966-1-4652766
tdegwy@ae.com.sa
www.ae.com.sa

Singapur

Tokimeku Pte Ltd
Phone +65 6748 6830
sales@tokimeku.com

Slovenia, Croatia, Serbia

Amtest d.o.o.
Phone +385-1-3908500
Fax +385-1-3908509
mitja.zupan@amtest-smt.com
www.amtest-smt.com

South Africa

Cadshop Pty. Ltd.
Phone +27 21 782-0752
Mobil +27 82 377-0052
davidpower@vodamail.co.za
www.cadshop.co.za

South Korea

LPKF Korea Laser & Electronics Ltd.
Phone +82-31-689-3660
Fax +82-31-478-5988
sales.korea@lpkf.com
www.lpkf.kr

Spain

LaserProtonics
Phone +34 662 138 866
angel.martinez@laserprotonics.com
www.laserprotonics.com

Sweden

SOLECTRO AB
Phone +46-40-536-600
Fax +46-40-536-610
Solectro@Solectro.se
www.solectro.se

Switzerland

Lumatron AG
Phone +41-62-7977580
Fax +41-62-7977581
h.kurth@lumatron.ch
www.lumatron.ch

Hilpert electronics AG

Phone +41 56 483 25 25
Fax +41 56 483 25 20
office@hilpert.ch
www.hilpert.ch

Taiwan R.O.C.

Li Huey Co. Ltd.
Phone +886-2-22405585
Fax +886-2-22405285
kevin@lihuey.com
www.lihuey.com

Microsys Engineering Co., Ltd.

Phone +886-3-222-3170
Fax +886-3-222-3150
microsys@ms7.hinet.net
www.microsys-e.com.tw

The Netherlands

Tooltronics B.V.
Phone +31-88-2916652
Fax +31-84-8776655
peter.oelen@tooltronics.nl
www.tooltronics.nl

Turkey

TAMARA Elektronik Müh. Ltd. Sti.
Phone +90-2164189294
Fax +90-2164189396
tamara@tamara.com.tr
www.tamara.com.tr

GZ Elektronik Yönetim Sist. Ltd. Sti.

Phone +90 312 428 0239
Fax +90 312 428 0239
info@gz.com.tr
www.gz.com.tr

Ukraine

SPF VD MAIS
Phone +380-44-2200101
Fax +380-44-2200202
v.linskiy@vdmals.kiev.ua
www.vdmals.kiev.ua

USA

LPKF Distribution Inc.
Phone +1-503-454-4200
Fax +1-503-682-7151
info@lpkfusa.com
www.lpkfusa.com

Venezuela

Inversiones Makarelli, C.A.
Phone +58-212-985-4822
Fax +58-212-256-1521
inversionesmakarelli@gmail.com

Vietnam

TSM Trading and Technical
Services JSC.
Phone +84 912 048 118
info@tsmgroup.vn



Legal Information

Price Lists

Any price lists inserted into the catalog or supplied with the catalog are not part of the catalog. All prices are subject to change without notice. Please contact LPKF or an LPKF distributor for the latest offers.

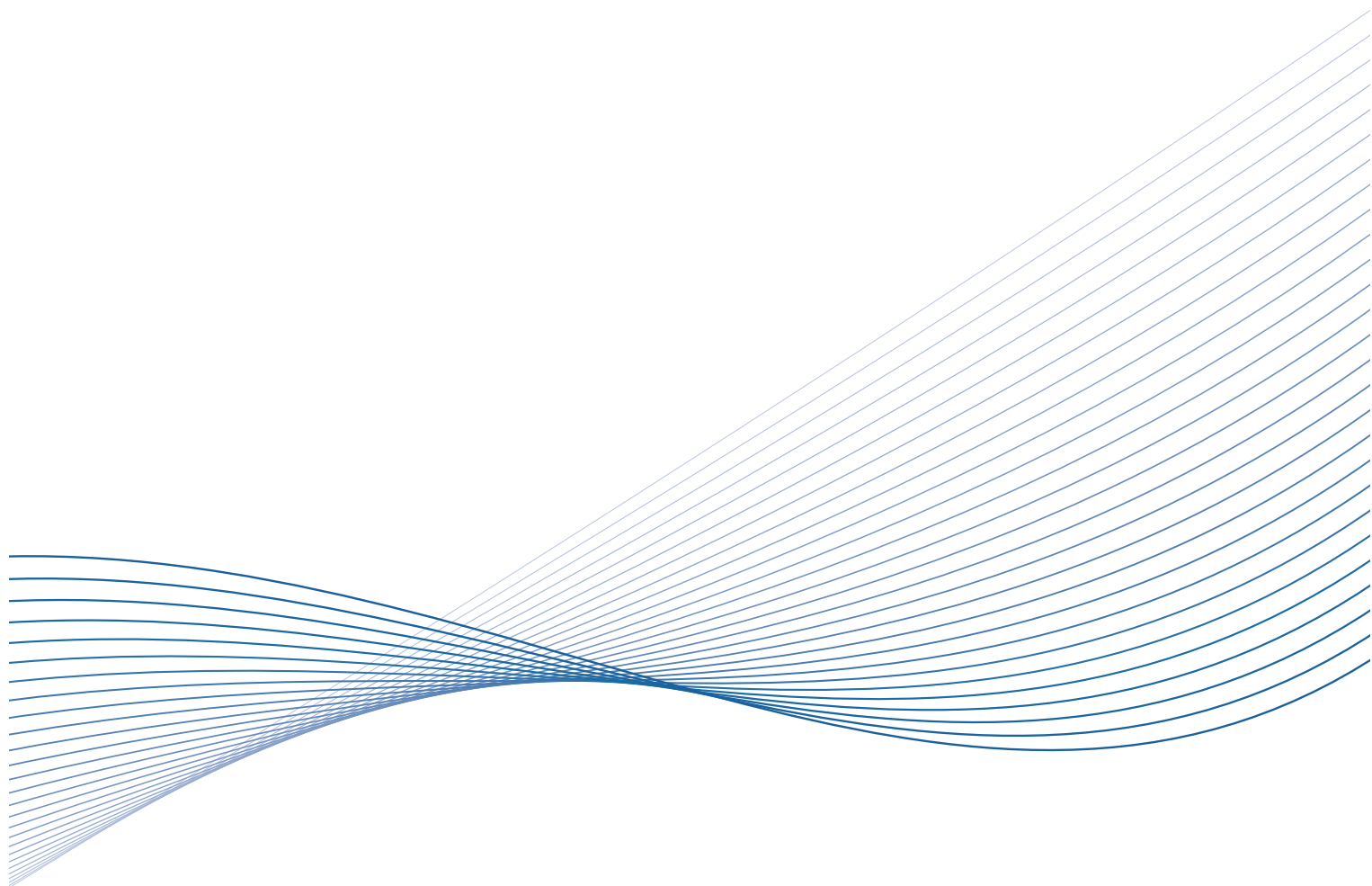
Disclaimer

Errors and omissions excepted. Specifications subject to change without notice. The information that LPKF provides in this catalog has been compiled with great care. Although every effort has been made to ensure its accuracy, errors cannot be completely ruled out. LPKF Laser & Electronics AG does not accept any liability for or provide any guarantee of the correctness, accuracy, or completeness of the information provided herein. LPKF reserves the right to change or supplement the information and data provided without prior notice.

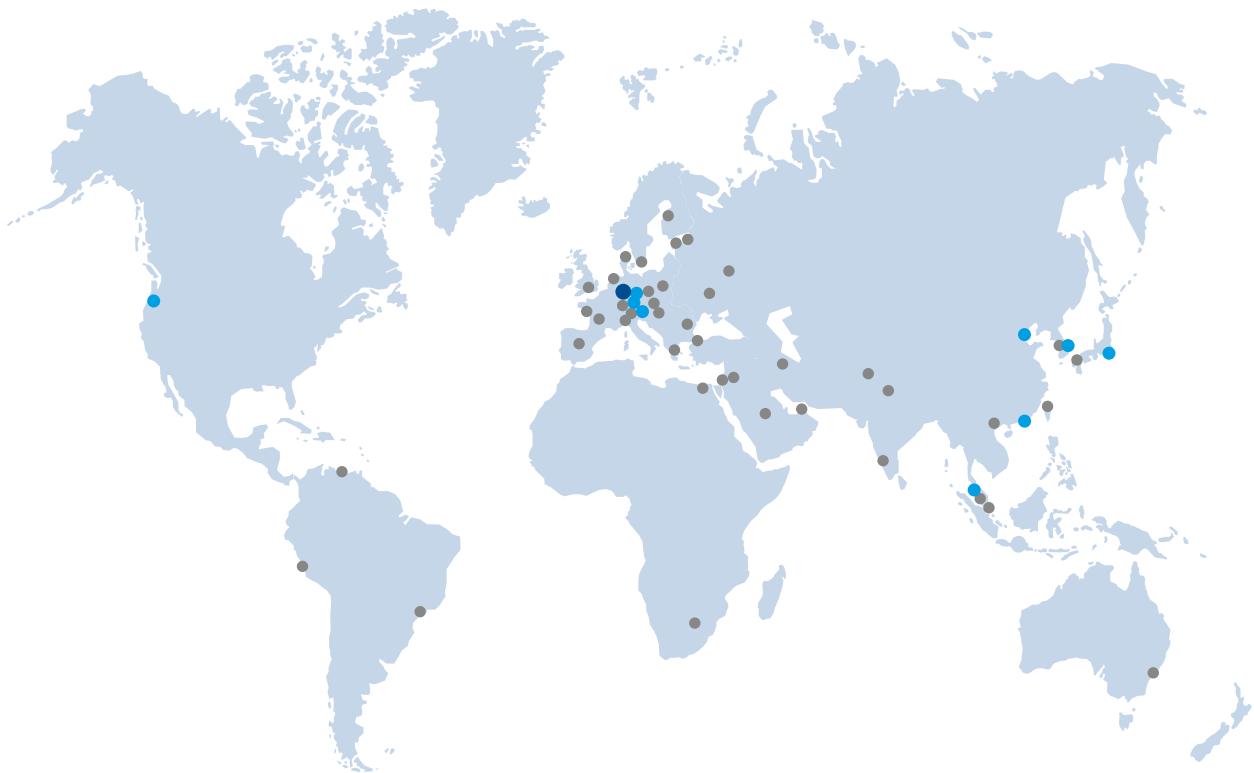
Copyright, Trademark, and Patent Information

© 2021 LPKF Laser & Electronics AG, Garbsen, Germany. All rights reserved. The contents of this catalog, including images and the catalog design, are protected by copyright and other laws to protect intellectual property. The systems and products of LPKF and their subsidiaries are protected by the applicable German laws and, in some cases, international patents. Product and trade names mentioned in the product catalog are, in some cases, registered trademarks of the respective manufacturers. The LPKF logo, “LPKF ProtoMat”, “ProConduct”, “ProtoLaser”, “CircuitPro”, “ProMask”, “Allegro”, “SolarQuipment”, “Vittrion”, “LIDE”, “ARRALYZE” und “WeldingQuipment” are registered trademarks of LPKF Laser & Electronics AG.

LPKF Laser & Electronics AG
Osteriede 7
30827 Garbsen
Germany




LPKF circuit board plotters and laser systems have been delivering outstanding performance in laboratories and development departments around the world for many years now. More than 50 branch offices and distributors are available to ensure seamless services and provide support and advice.




The global LPKF network for service and distribution:


- Headquarters
- LPKF Group
- LPKF Distributors



LPKF Service & Support
 LPKF provides worldwide premium customer support. Learn more: www.lpkf.com/support



More on the Topic
 LPKF TechGuide also available! Request your copy today: www.lpkf.com/techguide

LPKF Laser & Electronics AG sells and markets products and provides support in more than 50 countries. Find your local representative at www.lpkf.com.

